

Total Number of IDP

198

Total Number of Households

41

## Geographic Data

## GPS Coordinates

State / Region : Rakhine

Latitude : 20.04°

Township : Myebon

Longitude : 93.37°

Vil. Tract / Town : Urban

Village/Ward : Kan Thar Htwet Wa

Available Services (in camp, outside the camp, no access) as of 01-07-15

Temp. Learning Space	No access	School	Outside the camp
Child Friendly Space	Inside the camp	Walkways	No access
Health facilities	Outside the camp	Mobile clinic	Inside the camp
Drinking Water	Inside the camp	Market	Outside the camp

## Population dynamics

## Repartition by Ethnicities (estimated)

Hindu	0%	Muslim	0%
Kaman	0%	Rakhine	100%
Maramgyi	0%		

## Population living in the camp by Age &amp; Gender

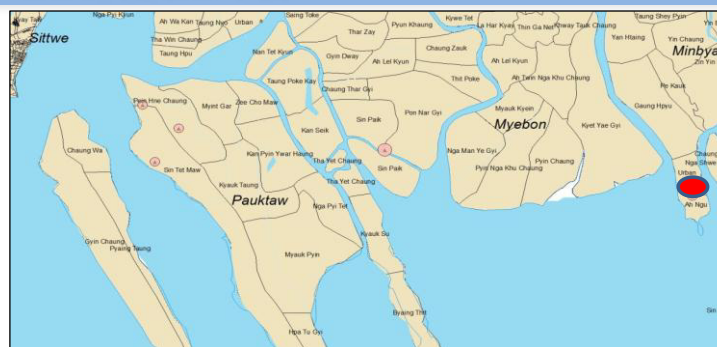
Age (Years)	Male	Female
60+	14	13
26 to 59	45	38
18 to 25	13	11
12-17	17	11
6 to 11	14	9
0 < 5	8	5

Age is systematically collected in the camp registration book/list

## Population Living in the Camp, by Vulnerability

Serious Medical Conditions	4
Disabilities	2
Single Parent	3
Elderly at Risk	12
Women at Risk	3
Children at Risk	0
Unaccompanied children	0
Separated children	0

Vulnerability is collected in the camp by CCCM focal point



The interagency camp profiling process is an on-going activity promoted, coordinated and delivered by the Shelter/NFI/CCCM Cluster. The information is collected from a number of sources and compiled into a series of a single camp profiles. This document represents single camp profile. The source of information are cluster focal points.



## Access to Services and Sectoral Needs

## Water &amp; Sanitation as of 01-07-15

Water needs coverage (exclu: HH soln:)	0%
Potential Water coverage (inclu: HWTS)	100%
Est: water needs coverage at EoP	100%
Latrine needs coverage	100%
Est: latrine needs coverage at EoP	100%
Bathing space coverage	20%
Est: bathroom needs coverage at EoP	100%
Hygiene kits coverage	100%
Water facilities management	Functional and efficient

## Health for the period of January-15

Frequency of mobile clinic; # of day :	20
Average working hours by mobile clinic	4
# identified cases of diarrhoea	1
# identified cases of resp. tract inf.	0
# identified cases of malaria	0
# pregnant women received	1
# clients/family planning received	0
# emergency reproductive health cases	Unavaila
# trained community health workers	1
# traditional birth attendants	0
# midwives and auxiliary midwives	0

## Education as of 01-06-15

	#TLS	# Enrolled		# Teacher	
		Male	Female	Male	Female
ECCD	0	0	0	0	0
Primary	2	0	0	4	4
Post-Prim.	0	0	0	0	0
Total	2	0	0	4	4

## Food (Monthly Household Ration)

Rice	13.5 kg	Salt	0.15 kg
Pulses	1.8 kg	Blended Food	1.90 kg
Oil	0.90 lit.		

## Protection as of 01-07-15

Child protection case management	Yes
Case management - adults	Yes
Psychosocial support	Yes
Child friendly spaces (CFS)	Yes
Women and girls centre	NA
GBV related health services	NA
Community based protection group	Yes
Transferring protection skills	Yes
Adolescent assets & life skills building	Yes
Protection monitoring	Yes
Safety audits	Yes
Family tracing	Yes

## Shelter/NFI as of

Total number of built shelters	6
Temp & Permanent Shelter Coverage	100%
Individual Shelter Coverage	0%
Household covered by temporary shelters	48
Total number of Building Shelters	0

## Available infrastructure:

## Lasts NFI Distributions:

RI	2015-03-01
UNHCR	2013-08-08
UNICEF	2013-02-08

## CCCM as of 01-07-15

CCCM Type	Focal Point
CCCM Organization	Relief International
Opening Date	0

Complaints mechanism in place

## Gaps:

## Livelihood:

## Food : (last food distributions)

Donor	HH	Ind	Update
WFP	43	219	2015-07-01

## Nutrition as of 29-05-15

Therapeutic Care Program( OTP/SC)	Yes
Blanket Sup. Feeding Program(BSFP)	No
Targeted Sup. Feeding for MAM (TSFP)	Yes
Infant and Young Child Feeding support	Yes
Mental Health Care Practice(MHCP)	No
Micro-nutrient supplementation(MMN)	Yes
Ante Natal Care activity(ANC)	No
Mental Health Care Practice(MHCP)	No
Screening	Yes

For more information, contact UNHCR Yangon Information Management Unit - ricouart@unhcr.org or the national CCCM cluster coordinator- benson@unhcr.org

Total Number of IDP

2,701

Total Number of Households

668

## Geographic Data

## GPS Coordinates

State / Region : Rakhine

Latitude : 20.04°

Township : Myebon

Longitude : 93.37°

Vil. Tract / Town : Ah Ngu

Village/Ward : Pyin Taw Che

Available Services (in camp, outside the camp, no access) as of 01-07-15

Temp. Learning Space	Inside the camp	School	No access
Child Friendly Space	Inside the camp	Walkways	No access
Health facilities	No access	Mobile clinic	Inside the camp
Drinking Water	Inside the camp	Market	No access

## Population dynamics

## Repartition by Ethnicities (estimated)

Hindu	0%	Muslim	94%
Kaman	6%	Rakhine	0%
Maramagyi	0%		

## Population living in the camp by Age &amp; Gender

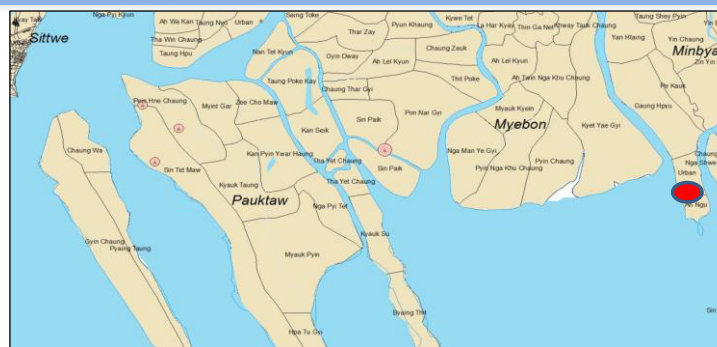
Age (Years)	Male	Female
60+	51	42
26 to 59	375	471
18 to 25	165	195
12-17	193	209
6 to 11	237	259
0 < 5	238	266

Age is systematically collected in the camp registration book/list

## Population Living in the Camp, by Vulnerability

Serious Medical Conditions	51
Disabilities	34
Single Parent	70
Elderly at Risk	53
Women at Risk	121
Children at Risk	68
Unaccompanied children	3
Separated children	12

Vulnerability is collected in the camp by CCCM focal point



The interagency camp profiling process is an on-going activity promoted, coordinated and delivered by the Shelter/NFI/CCCM Cluster. The information is collected from a number of sources and compiled into a series of a single camp profiles. This document represents single camp profile. The source of information are cluster focal points.



## Access to Services and Sectoral Needs

## Water &amp; Sanitation as of 01-07-15

Water needs coverage (exclu: HH soln:)	61%
Potential Water coverage (inclu: HWTS)	100%
Est: water needs coverage at EoP	100%
Latrine needs coverage	100%
Est: latrine needs coverage at EoP	100%
Bathing space coverage	91%
Est: bathroom needs coverage at EoP	75%
Hygiene kits coverage	100%
Water facilities management	Functional and efficient

## Health for the period of January-15

Frequency of mobile clinic; # of day :	20
Average working hours by mobile clinic	4
# identified cases of diarrhoea	17
# identified cases of resp. tract inf.	0
# identified cases of malaria	0
# pregnant women received	4
# clients/family planning received	0
# emergency reproductive health cases	0
# trained community health workers	13
# traditional birth attendants	5
# midwives and auxiliary midwives	3

## Education as of 01-06-15

	#TLS	# Enrolled		# Teacher	
		Male	Female	Male	Female
ECCD	0	0	0	0	0
Primary	1	396	385	8	6
Post-Prim.	1	52	41	0	0
Total	2	448	426	8	6

## Food (Monthly Household Ration)

Rice	13.5 kg	Salt	0.15 kg
Pulses	1.8 kg	Blended Food	1.90 kg
Oil	0.90 lit.		

## Protection as of 01-07-15

Child protection case management	Yes
Case management - adults	Yes
Psychosocial support	Yes
Child friendly spaces (CFS)	Yes
Women and girls centre	NA
GBV related health services	NA
Community based protection group	Yes
Transferring protection skills	Yes
Adolescent assets & life skills building	Yes
Protection monitoring	Yes
Safety audits	Yes
Family tracing	Yes

## Shelter/NFI as of

Total number of built shelters	89
Temp & Permanent Shelter Coverage	100%
Individual Shelter Coverage	0%
Household covered by temporary shelters	712
Total number of Building Shelters	0

## Available infrastructure:

## Lasts NFI Distributions:

RI	2015-03-01
UNHCR	2013-08-08
UNICEF	2013-02-08

## CCCM as of 01-07-15

CCCM Type	Focal Point
CCCM Organization	Relief International
Opening Date	0

## Complaints mechanism in place

## Gaps:

Gaps identified by camp managers:  
Access to job opportunities, School facilities, Firewood/ fuel

Gaps identified by camp residents:  
0, 0, 0

## Livelihood:

## Food : (last food distributions)

Donor	HH	Ind	Update
WFP	716	2800	2015-07-01

## Nutrition as of 29-05-15

Therapeutic Care Program( OTP/SC)	Yes
Blanket Sup. Feeding Program(BSFP)	No
Targeted Sup. Feeding for MAM (TSFP)	Yes
Infant and Young Child Feeding support	Yes
Mental Health Care Practice(MHCP)	No
Micro-nutrient supplementation(MMN)	Yes
Ante Natal Care activity(ANC)	No
Mental Health Care Practice(MHCP)	No
Screening	Yes

For more information, contact UNHCR Yangon Information Management Unit - ricouart@unhcr.org or the national CCCM cluster coordinator- benson@unhcr.org

Total Number of IDP

122

Total Number of Households

21

## Geographic Data

## GPS Coordinates

State / Region : Rakhine

Latitude : 20.17°

Township : Pauktaw

Longitude : 93.07°

Vil. Tract / Town : Urban

Village/Ward : Ba Wan Chaung Wa Su

Available Services (in camp, outside the camp, no access) as of 06-07-15

Temp. Learning Space	No access	School	Inside the camp
Child Friendly Space	Outside the camp	Walkways	Inside the camp
Health facilities	Outside the camp	Mobile clinic	Outside the camp
Drinking Water	Outside the camp	Market	Outside the camp

## Population dynamics

# birth 0

# death 0

## Repartition by Ethnicities (estimated)

Hindu	0%	Muslim	0%
Kaman	0%	Rakhine	100%
Maramgyi	0%		

## Population living in the camp by Age &amp; Gender

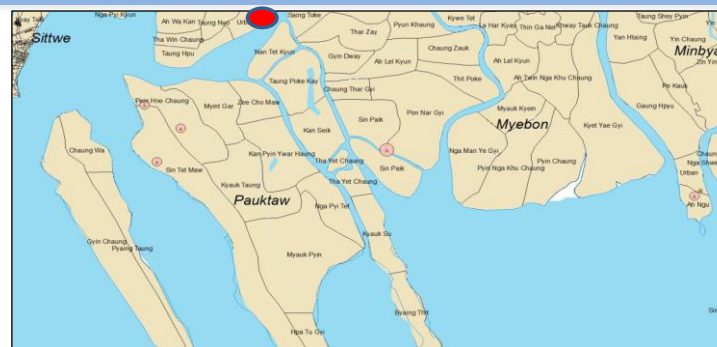
Age (Years)	Male	Female
60+	1	2
26 to 59	16	23
18 to 25	18	19
12-17	7	
6 to 11	10	5
0 < 5	7	14

Age is systematically collected in the camp registration book/list

## Population Living in the Camp, by Vulnerability

Serious Medical Conditions	2
Disabilities	4
Single Parent	1
Elderly at Risk	0
Women at Risk	11
Children at Risk	0
Unaccompanied children	0
Separated children	0

Vulnerability is collected in the camp by CCCM focal point



The interagency camp profiling process is an on-going activity promoted, coordinated and delivered by the Shelter/NFI/CCCM Cluster. The information is collected from a number of sources and compiled into a series of a single camp profiles. This document represents single camp profile. The source of information are cluster focal points.



## Access to Services and Sectoral Needs

## Water &amp; Sanitation as of 01-07-15

Water needs coverage (exclu: HH soln:)	0%
Potential Water coverage (inclu: HWTS)	0%
Est: water needs coverage at EoP	25%
Latrine needs coverage	62%
Est: latrine needs coverage at EoP	80%
Bathing space coverage	100%
Est: bathroom needs coverage at EoP	100%
Hygiene kits coverage	0%
Water facilities management	Not yet planned

## Health for the period of January-15

Frequency of mobile clinic; # of day :	0
Average working hours by mobile clinic	0
# identified cases of diarrhoea	0
# identified cases of resp. tract inf.	0
# identified cases of malaria	0
# pregnant women received	0
# clients/family planning received	0
# emergency reproductive health cases	0
# trained community health workers	0
# traditional birth attendants	0
# midwives and auxiliary midwives	0

## Education as of 01-06-15

	#TLS	# Enrolled	# Teacher
		Male	Female
ECCD	0	0	0
Primary	0	0	0
Post-Prim.	0	0	0
Total	0	0	0

## Food (Monthly Household Ration)

Rice	13.5 kg	Salt	0.15 kg
Pulses	1.8 kg	Blended Food	1.90 kg
Oil	0.90 lit.		

## Protection as of 01-07-15

Child protection case management	NA
Case management - adults	NA
Psychosocial support	Yes
Child friendly spaces (CFS)	NA
Women and girls centre	NA
GBV related health services	NA
Community based protection group	Yes
Transferring protection skills	NA
Adolescent assets & life skills building	NA
Protection monitoring	Yes
Safety audits	NA
Family tracing	NA

## Shelter/NFI as of

Total number of built shelters	3
Temp & Permanent Shelter Coverage	100%
Individual Shelter Coverage	100%
Household covered by temporary shelters	51
Total number of Building Shelters	0

## Available infrastructure:

## Lasts NFI Distributions:

AGE	2014-08-01
UNHCR	2013-09-19
UNICEF	2013-02-22

## CCCM as of 01-07-15

CCCM Type	Camp Management
CCCM Organization	Lutheran World Federation
Opening Date	0

Complaints mechanism in place

## Gaps:

Gaps identified by camp managers: School facilities, Health facilities, Wash facilities

Gaps identified by camp residents: NFI, Vocational Training, Wash facilities

## Livelihood:

Current activities for male: Fishing, Daily worker, Livestock

Current activities for female: dry fish, Trade, Livestock

Self reliance programme in place: 0

## Food : (last food distributions)

Donor	HH	Ind	Update
WFP	21	96	2015-07-01

## Nutrition as of 29-05-15

Therapeutic Care Program( OTP/SC)	No
Blanket Sup. Feeding Program(BSFP)	No
Targeted Sup. Feeding for MAM (TSFP)	No
Infant and Young Child Feeding support	Yes
Mental Health Care Practice(MHCP)	No
Micro-nutrient supplementation(MMN)	No
Ante Natal Care activity(ANC)	No
Mental Health Care Practice(MHCP)	No
Screening	Yes

For more information, contact UNHCR Yangon Information Management Unit - ricouart@unhcr.org or the national CCCM cluster coordinator- benson@unhcr.org



## Total Number of IDP

4,272

## Total Number of Households

1,154

## Geographic Data

## GPS Coordinates

State / Region : Rakhine  
 Township : Pauktaw  
 Vil. Tract / Town : Pein Hne Chaung  
 Village/Ward : Kyauk Pyin Seik

Latitude : 20.11°  
 Longitude : 92.99°

## Available Services (in camp, outside the camp, no access) as of 06-07-15

Temp. Learning Space	Inside the camp	School	No access
Child Friendly Space	Inside the camp	Walkways	Inside the camp
Health facilities	Inside the camp	Mobile clinic	Inside the camp
Drinking Water	Inside the camp	Market	No access

## Population dynamics

# birth : 12  
 # death : 0

## Repartition by Ethnicities (estimated)

Hindu	0%	Muslim	100%
Kaman	0%	Rakhine	0%
Maramgyi	0%		

## Population living in the camp by Age &amp; Gender

Age (Years)	Male	Female
60+	62	48
26 to 59	469	523
18 to 25	266	688
12-17	297	
6 to 11	546	495
0 < 5	406	472

Age is systematically collected in the camp registration book/list

## Population Living in the Camp, by Vulnerability

Serious Medical Conditions	
Disabilities	33
Single Parent	15
Elderly at Risk	2
Women at Risk	286
Children at Risk	
Unaccompanied children	
Separated children	1

Vulnerability is collected in the camp by CCCM focal point



The interagency camp profiling process is an on-going activity promoted, coordinated and delivered by the Shelter/NFI/CCCM Cluster. The information is collected from a number of sources and compiled into a series of a single camp profiles. This document represents single camp profile. The source of information are cluster focal points.



## Access to Services and Sectoral Needs

## Water &amp; Sanitation as of 01-07-15

Water needs coverage (exclu: HH soln:)	21%
Potential Water coverage (inclu: HWTS)	21%
Est: water needs coverage at EoP	22%
Latrine needs coverage	69%
Est: latrine needs coverage at EoP	90%
Bathing space coverage	0%
Est: bathroom needs coverage at EoP	0%
Hygiene kits coverage	98%
Water facilities management	Not yet planned

## Health for the period of January-15

Frequency of mobile clinic; # of day :	4
Average working hours by mobile clinic	4
# identified cases of diarrhoea	63
# identified cases of resp. tract inf.	46
# identified cases of malaria	0
# pregnant women received	21
# clients/family planning received	0
# emergency reproductive health cases	0
# trained community health workers	12
# traditional birth attendants	4
# midwives and auxiliary midwives	8

## Education as of 01-06-15

	#TLS	# Enrolled	# Teacher
		Male Female	Male Female
ECCD	0	0 0	0 0
Primary	3	337 203	11 5
Post-Prim.	0	73 17	2 0
Total	3	410 220	13 5

## Food (Monthly Household Ration)

Rice	13.5 kg	Salt	0.15 kg
Pulses	1.8 kg	Blended Food	1.90 kg
Oil	0.90 lit.		

## Protection as of 01-07-15

Child protection case management	Yes
Case management - adults	Yes
Psychosocial support	Yes
Child friendly spaces (CFS)	Yes
Women and girls centre	Yes
GBV related health services	NA
Community based protection group	Yes
Transferring protection skills	Yes
Adolescent assets & life skills building	Yes
Protection monitoring	Yes
Safety audits	NA
Family tracing	Yes

## Shelter/NFI as of

Total number of built shelters	96
Temp & Permanent Shelter Coverage	67%
Individual Shelter Coverage	0%
Household covered by temporary shelters	768
Total number of Building Shelters	0

## Available infrastructure:

## Lasts NFI Distributions:

AGE	2014-08-01
UNHCR	2013-08-27
Save the Children	2013-05-29

## CCCM as of 01-07-15

CCCM Type	Camp Management
CCCM Organization	Lutheran World Federation
Opening Date	0

Complaints mechanism in place

## Gaps:

Gaps identified by camp managers:  
 Access to job opportunities, Shelter, School facilities

Gaps identified by camp residents:  
 NFI, School facilities, Shelter

## Livelihood:

Current activities for male:  
 Fishing, Trade, Livestock

Current activities for female:  
 Trade, Livestock, sewing  
 Self reliance programme in place: 0

## Food : (last food distributions)

Donor	HH	Ind	Update
WFP	980	4032	2015-07-01

## Nutrition as of 29-05-15

Therapeutic Care Program( OTP/SC)	Yes
Blanket Sup. Feeding Program(BSFP)	No
Targeted Sup. Feeding for MAM (TSFP)	Yes
Infant and Young Child Feeding support	Yes
Mental Health Care Practice(MHCP)	No
Micro-nutrient supplementation(MMN)	Yes
Ante Natal Care activity(ANC)	Yes
Mental Health Care Practice(MHCP)	No
Screening	Yes

For more information, contact UNHCR Yangon Information Management Unit - ricouart@unhcr.org  
 or the national CCCM cluster coordinator- benson@unhcr.org



Total Number of IDP

7,402

Total Number of Households

1,561

## Geographic Data

## GPS Coordinates

State / Region : Rakhine  
 Township : Pauktaw  
 Vil. Tract / Town : Pon Nar Gyi  
 Village/Ward : Cha Eik

Latitude : 20.07°  
 Longitude : 93.15°

Available Services (in camp, outside the camp, no access) as of 06-07-15

Temp. Learning Space	Inside the camp	School	No access
Child Friendly Space	No access	Walkways	Inside the camp
Health facilities	Inside the camp	Mobile clinic	Inside the camp
Drinking Water	Inside the camp	Market	Outside the camp

## Population dynamics

# birth : 18  
 # death : 2

## Repartition by Ethnicities (estimated)

Hindu	0%	Muslim	100%
Kaman	0%	Rakhine	0%
Maramgyi	0%		

## Population living in the camp by Age &amp; Gender

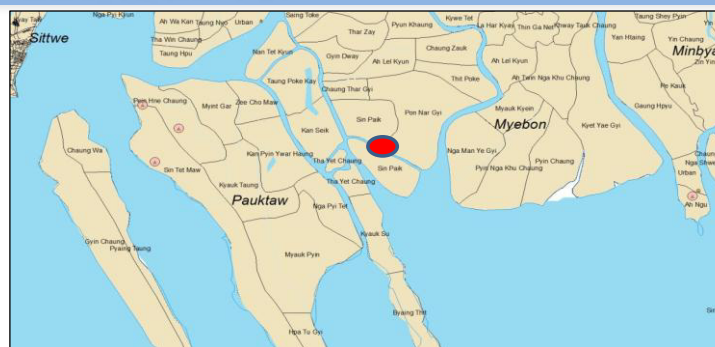
Age (Years)	Male	Female
60+	117	94
26 to 59	850	747
18 to 25	509	758
12-17	522	383
6 to 11	740	743
0 < 5	1,000	939

Age is systematically collected in the camp registration book/list

## Population Living in the Camp, by Vulnerability

Serious Medical Conditions	12
Disabilities	31
Single Parent	9
Elderly at Risk	33
Women at Risk	640
Children at Risk	4
Unaccompanied children	8
Separated children	4

Vulnerability is collected in the camp by CCCM focal point



The interagency camp profiling process is an on-going activity promoted, coordinated and delivered by the Shelter/NFI/CCCM Cluster. The information is collected from a number of sources and compiled into a series of a single camp profiles. This document represents single camp profile. The source of information are cluster focal points.



## Access to Services and Sectoral Needs

## Water &amp; Sanitation as of 01-07-15

Water needs coverage (exclu: HH soln:)	41%
Potential Water coverage (inclu: HWTS)	41%
Est: water needs coverage at EoP	41%
Latrine needs coverage	28%
Est: latrine needs coverage at EoP	90%
Bathing space coverage	0%
Est: bathroom needs coverage at EoP	0%
Hygiene kits coverage	0%
Water facilities management	Not yet planned

## Health for the period of January-15

Frequency of mobile clinic; # of day :	4
Average working hours by mobile clinic	3
# identified cases of diarrhoea	12
# identified cases of resp. tract inf.	16
# identified cases of malaria	0
# pregnant women received	3
# clients/family planning received	0
# emergency reproductive health cases	0
# trained community health workers	10
# traditional birth attendants	5
# midwives and auxiliary midwives	1

## Education as of 01-06-15

	#TLS	# Enrolled		# Teacher	
		Male	Female	Male	Female
ECCD	0	0	0	0	0
Primary	12	1260	883	42	6
Post-Prim.	0	334	42	8	0
Total	12	1594	925	50	6

## Food (Monthly Household Ration)

Rice	13.5 kg	Salt	0.15 kg
Pulses	1.8 kg	Blended Food	1.90 kg
Oil	0.90 lit.		

## Protection as of 01-07-15

Child protection case management	Yes
Case management - adults	Yes
Psychosocial support	Yes
Child friendly spaces (CFS)	Yes
Women and girls centre	NA
GBV related health services	NA
Community based protection group	Yes
Transferring protection skills	NA
Adolescent assets & life skills building	Yes
Protection monitoring	Yes
Safety audits	NA
Family tracing	Yes

## Shelter/NFI as of

Total number of built shelters	170
Temp & Permanent Shelter Coverage	87%
Individual Shelter Coverage	42%
Household covered by temporary shelters	2012
Total number of Building Shelters	0

## Available infrastructure:

## Lasts NFI Distributions:

AGE	2014-08-01
UNHCR	2014-01-15
Save the Children	2013-05-29
UNICEF	2013-02-22

## CCCM as of 01-07-15

CCCM Type	Camp Management
CCCM Organization	Lutheran World Federation
Opening Date	0

Complaints mechanism in place

## Gaps:

Gaps identified by camp managers:  
 Firewood/ fuel, NFI, Health facilities

Gaps identified by camp residents:  
 Food, Firewood/ fuel, Access to job opportunities

## Livelihood:

Current activities for male:  
 Fishing, Livestock, Trade

Current activities for female:  
 Fishing, Trade, Livestock

Self reliance programme in place: 0

## Food : (last food distributions)

Donor	HH	Ind	Update
WFP	1288	6323	2015-07-01

## Nutrition as of 29-05-15

Therapeutic Care Program( OTP/SC)	Yes
Blanket Sup. Feeding Program(BSFP)	No
Targeted Sup. Feeding for MAM (TSFP)	Yes
Infant and Young Child Feeding support	Yes
Mental Health Care Practice(MHCP)	No
Micro-nutrient supplementation(MMN)	Yes
Ante Natal Care activity(ANC)	Yes
Mental Health Care Practice(MHCP)	No
Screening	Yes

For more information, contact UNHCR Yangon Information Management Unit - ricouart@unhcr.org  
 or the national CCCM cluster coordinator- benson@unhcr.org

Total Number of IDP

4,685

Total Number of Households

971

## Geographic Data

## GPS Coordinates

State / Region : Rakhine  
 Township : Pauktaw  
 Vil. Tract / Town : Pein Hne Chaung  
 Village/Ward : Kyein Ni Pyin

Latitude : 20.09°  
 Longitude : 93.01°

Available Services (in camp, outside the camp, no access) as of 30-06-15

Temp. Learning Space	inside the camp	School	No access
Child Friendly Space	inside the camp	Walkways	inside the camp
Health facilities	No access	Mobile clinic	inside the camp
Drinking Water	inside the camp	Market	inside the camp

## Population dynamics

# birth 127  
 # death 9

## Repartition by Ethnicities (estimated)

Hindu	0%	Muslim	100%
Kaman	0%	Rakhine	0%
Maramgyi	0%		

## Population living in the camp by Age &amp; Gender

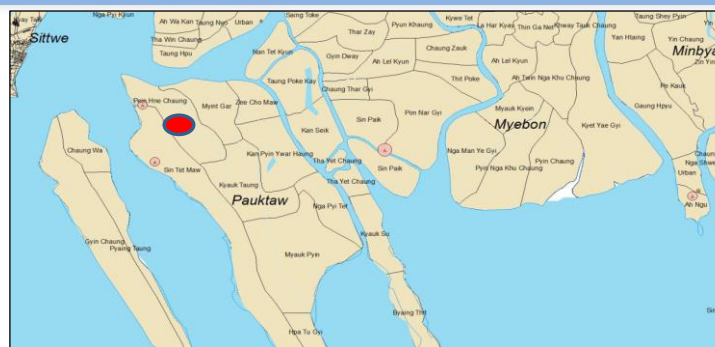
Age (Years)	Male	Female
60 +	102	116
18-59	899	1036
12-17	288	278
5-11	327	328
0 < 5	666	643

Age is systematically collected in the camp registration book/list

## Population Living in the Camp, by Vulnerability

Mental dis.	0
Unaccompanied children	0
Single Parent Male	0
Single Parent Female	164
Separated children	0
Pregnant Women	243
Physical dis.	57
Lactating Women	331
Child HH	0

Vulnerability is collected in the camp by CCCM focal point



The interagency camp profiling process is an on-going activity promoted, coordinated and delivered by the Shelter/NFI/CCCM Cluster. The information is collected from a number of sources and compiled into a series of a single camp profiles. This document represents single camp profile. The source of information are cluster focal points.



## Access to Services and Sectoral Needs

## Water &amp; Sanitation as of 01-07-15

Water needs coverage (exclu: HH soln:)	56%
Potential Water coverage (inclu: HWTS)	100%
Est: water needs coverage at EoP	100%
Latrine needs coverage	29%
Est: latrine needs coverage at EoP	100%
Bathing space coverage	0%
Est: bathroom needs coverage at EoP	79%
Hygiene kits coverage	100%
Water facilities management	Set up but low results

## Health for the period of January-15

Frequency of mobile clinic; # of day :	4
Average working hours by mobile clinic	4
# identified cases of diarrhoea	11
# identified cases of resp. tract inf.	10
# identified cases of malaria	0
# pregnant women received	5
# clients/family planning received	0
# emergency reproductive health cases	0
# trained community health workers	7
# traditional birth attendants	7
# midwives and auxiliary midwives	7

## Education as of 01-06-15

	#TLS	# Enrolled	# Teacher
		Male Female	Male Female
ECCD	0	0 0	0 0
Primary	5	396 319	15 0
Post-Prim.	2	88 49	6 2
Total	7	484 368	21 2

## Food (Monthly Household Ration)

Rice	13.5 kg	Salt	0.15 kg
Pulses	1.8 kg	Blended Food	1.90 kg
Oil	0.90 lit.		

## Protection as of 01-07-15

Child protection case management	Yes
Case management - adults	Yes
Psychosocial support	Yes
Child friendly spaces (CFS)	Yes
Women and girls centre	Yes
GBV related health services	NA
Community based protection group	Yes
Transferring protection skills	Yes
Adolescent assets & life skills building	Yes
Protection monitoring	Yes
Safety audits	NA
Family tracing	Yes

## Shelter/NFI as of

Total number of built shelters	108
Temp & Permanent Shelter Coverage	88%
Individual Shelter Coverage	12%
Household covered by temporary shelters	968
Total number of Building Shelters	0

## Available infrastructure:

## Lasts NFI Distributions:

UNHCR	2015-01-29
AGE	2014-08-01
Save the Children	2013-05-22

## CCCM as of 01-07-15

CCCM Type	Focal Point
CCCM Organization	Save the children
Opening Date	0
Complaints mechanism in place	

## Gaps:

Gaps identified by camp managers:  
 Access to job opportunities, Health facilities,  
 Firewood/ fuel

Gaps identified by camp residents:  
 Health facilities, Access to job opportunities,  
 Firewood/ fuel

## Livelihood:

Current activities for male:  
 Fishing, Trade, Other

Current activities for female:  
 Livestock, Other, Other

Self reliance programme in place:

## Food : (last food distributions)

Donor	HH	Ind	Update
WFP	962	4683	2015-07-01

## Nutrition as of 29-05-15

Therapeutic Care Program( OTP/SC)	Yes
Blanket Sup. Feeding Program(BSFP)	No
Targeted Sup. Feeding for MAM (TSFP)	Yes
Infant and Young Child Feeding support	Yes
Mental Health Care Practice(MHCP)	No
Micro-nutrient supplementation(MMN)	Yes
Ante Natal Care activity(ANC)	Yes
Mental Health Care Practice(MHCP)	No
Screening	Yes

For more information, contact UNHCR Yangon Information Management Unit - ricouart@unhcr.org  
 or the national CCCM cluster coordinator- benson@unhcr.org

Total Number of IDP

2,405

Total Number of Households

641

## Geographic Data

## GPS Coordinates

State / Region : Rakhine

Latitude : 20.06°

Township : Pauktaw

Longitude : 92.99°

Vil. Tract / Town : Sin Tet Maw

Village/Ward : Sin Tet Maw (Ku Lar)

Available Services (in camp, outside the camp, no access) as of 30-06-15

Temp. Learning Space	inside the camp	School	No access
Child Friendly Space	inside the camp	Walkways	inside the camp
Health facilities	No access	Mobile clinic	inside the camp
Drinking Water	inside the camp	Market	outside the camp

## Population dynamics

# birth	23
# death	9

## Repartition by Ethnicities (estimated)

Hindu	0%	Muslim	28%
Kaman	72%	Rakhine	0%
Maramgyi	0%		

## Population living in the camp by Age &amp; Gender

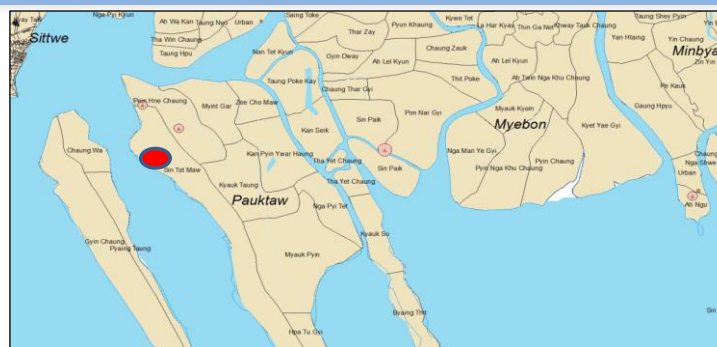
Age (Years)	Male	Female
60 +	35	47
18-59	575	641
12-17	135	139
5-11	198	218
0 < 5	206	211

Age is systematically collected in the camp registration book/list

## Population Living in the Camp, by Vulnerability

Mental dis.	0
Unaccompanied children	0
Single Parent Male	0
Single Parent Female	0
Separated children	0
Pregnant Women	26
Physical dis.	0
Lactating Women	0
Child HH	0

Vulnerability is collected in the camp by CCCM focal point



The interagency camp profiling process is an on-going activity promoted, coordinated and delivered by the Shelter/NFI/CCCM Cluster. The information is collected from a number of sources and compiled into a series of a single camp profiles. This document represents single camp profile. The source of information are cluster focal points.



## Access to Services and Sectoral Needs

## Water &amp; Sanitation as of 01-07-15

Water needs coverage (exclu: HH soln:)	100%
Potential Water coverage (inclu: HWTS)	100%
Est: water needs coverage at EoP	100%
Latrine needs coverage	100%
Est: latrine needs coverage at EoP	100%
Bathing space coverage	100%
Est: bathroom needs coverage at EoP	100%
Hygiene kits coverage	100%
Water facilities management	Functional and efficient

## Health for the period of January-15

Frequency of mobile clinic; # of day :	30
Average working hours by mobile clinic	24
# identified cases of diarrhoea	18
# identified cases of resp. tract inf.	8
# identified cases of malaria	0
# pregnant women received	6
# clients/family planning received	0
# emergency reproductive health cases	0
# trained community health workers	10
# traditional birth attendants	3
# midwives and auxiliary midwives	6

## Education as of 01-06-15

	#TLS	# Enrolled	# Teacher
		Male Female	Male Female
ECCD	0	0 0	0 0
Primary	2	379 365	0 0
Post-Prim.	4	272 186	10 5
Total	6	651 551	10 5

## Food (Monthly Household Ration)

Rice	13.5 kg	Salt	0.15 kg
Pulses	1.8 kg	Blended Food	1.90 kg
Oil	0.90 lit.		

## Protection as of 01-07-15

Child protection case management	Yes
Case management - adults	Yes
Psychosocial support	Yes
Child friendly spaces (CFS)	Yes
Women and girls centre	Yes
GBV related health services	NA
Community based protection group	Yes
Transferring protection skills	Yes
Adolescent assets & life skills building	Yes
Protection monitoring	Yes
Safety audits	NA
Family tracing	Yes

## Shelter/NFI as of

Total number of built shelters	106
Temp & Permanent Shelter Coverage	100%
Individual Shelter Coverage	0%
Household covered by temporary shelters	848
Total number of Building Shelters	0

## Available infrastructure:

## Lasts NFI Distributions:

AGE	2014-08-01
UNHCR	2014-01-16
Save the Children	2013-01-30

## CCCM as of 01-07-15

CCCM Type	Focal Point
CCCM Organization	Save the children
Opening Date	0
Complaints mechanism in place	

## Gaps:

Gaps identified by camp managers:  
Access to job opportunities, Medical Staff, Firewood/ fuel

Gaps identified by camp residents:  
Access to job opportunities, Medicines, Firewood/ fuel

## Livelihood:

Current activities for male:  
Fishing, Trade, Other

Current activities for female:  
Trade, Other, None

Self reliance programme in place:

## Food : (last food distributions)

Donor	HH	Ind	Update
WFP	681	2379	2015-07-01

## Nutrition as of 29-05-15

Therapeutic Care Program( OTP/SC)	Yes
Blanket Sup. Feeding Program(BSFP)	No
Targeted Sup. Feeding for MAM (TSFP)	Yes
Infant and Young Child Feeding support	Yes
Mental Health Care Practice(MHCP)	No
Micro-nutrient supplementation(MMN)	Yes
Ante Natal Care activity(ANC)	Yes
Mental Health Care Practice(MHCP)	No
Screening	Yes

For more information, contact UNHCR Yangon Information Management Unit - ricouart@unhcr.org or the national CCCM cluster coordinator- benson@unhcr.org



## Total Number of IDP

2,049

## Total Number of Households

397

## Geographic Data

## GPS Coordinates

State / Region : Rakhine  
 Township : Sittwe  
 Vil. Tract / Town : San Pya Ward  
 Village/Ward : 0

Latitude : 20.13°  
 Longitude : 92.88°

## Available Services (in camp, outside the camp, no access) as of 06-07-15

Temp. Learning Space	Inside the camp	School	Inside the camp
Child Friendly Space	Inside the camp	Walkways	Outside the camp
Health facilities	Inside the camp	Mobile clinic	Inside the camp
Drinking Water	Inside the camp	Market	Outside the camp

## Population dynamics

# birth : 0  
 # death : 0

## Repartition by Ethnicities (estimated)

Hindu	0%	Muslim	100%
Kaman	0%	Rakhine	0%
Maramagyi	0%		

## Population living in the camp by Age &amp; Gender

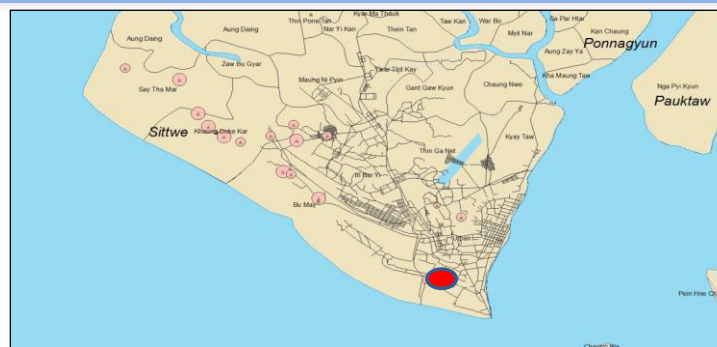
Age (Years)	Male	Female
60+	34	41
26 to 59	294	311
18 to 25	151	322
12-17	112	
6 to 11	145	136
0 < 5	263	240

Age is systematically collected in the camp registration book/list

## Population Living in the Camp, by Vulnerability

Serious Medical Conditions	6
Disabilities	32
Single Parent	19
Elderly at Risk	11
Women at Risk	206
Children at Risk	1
Unaccompanied children	5
Separated children	10

Vulnerability is collected in the camp by CCCM focal point



The interagency camp profiling process is an on-going activity promoted, coordinated and delivered by the Shelter/NFI/CCCM Cluster. The information is collected from a number of sources and compiled into a series of a single camp profiles. This document represents single camp profile. The source of information are cluster focal points.



## Access to Services and Sectoral Needs

## Water &amp; Sanitation as of 01-07-15

Water needs coverage (exclu: HH soln:)	100%
Potential Water coverage (inclu: HWTS)	100%
Est: water needs coverage at EoP	100%
Latrine needs coverage	100%
Est: latrine needs coverage at EoP	100%
Bathing space coverage	100%
Est: bathroom needs coverage at EoP	100%
Hygiene kits coverage	100%
Water facilities management	Functional and efficient

## Health for the period of January-15

Frequency of mobile clinic; # of day :	16
Average working hours by mobile clinic	5
# identified cases of diarrhoea	0
# identified cases of resp. tract inf.	0
# identified cases of malaria	1
# pregnant women received	13
# clients/family planning received	12
# emergency reproductive health cases	0
# trained community health workers	8
# traditional birth attendants	4
# midwives and auxiliary midwives	0

## Education as of 01-06-15

	#TLS	# Enrolled		# Teacher	
		Male	Female	Male	Female
ECCD	0	0	0	0	0
Primary	3	373	303	0	0
Post-Prim.	1	60	75	0	0
Total	4	433	378	0	0

## Food (Monthly Household Ration)

Rice	13.5 kg	Salt	0.15 kg
Pulses	1.8 kg	Blended Food	1.90 kg
Oil	0.90 lit.		

## Protection as of 01-07-15

Child protection case management	Yes
Case management - adults	Yes
Psychosocial support	Yes
Child friendly spaces (CFS)	Yes
Women and girls centre	NA
GBV related health services	NA
Community based protection group	Yes
Transferring protection skills	Yes
Adolescent assets & life skills building	Yes
Protection monitoring	Yes
Safety audits	NA
Family tracing	Yes

## Shelter/NFI as of

Total number of built shelters	52
Temp & Permanent Shelter Coverage	100%
Individual Shelter Coverage	0%
Household covered by temporary shelters	416
Total number of Building Shelters	0
Available infrastructure:	
Camp Management Office	1
MPB Large	1
MPB Small	1
Warehouse	1

## Lasts NFI Distributions:

LWF	2013-11-12
CDN	2013-01-01
UNHCR	2012-12-13

## CCCM as of 01-07-15

CCCM Type	Camp Management
CCCM Organization	Lutheran World Federation
Opening Date	0

Complaints mechanism in place

## Gaps:

Gaps identified by camp managers:  
 Access to job opportunities, Health facilities, School facilities

Gaps identified by camp residents:  
 Wash facilities, Access to job opportunities, Firewood/ fuel

## Livelihood:

Current activities for male:  
 Fishing, Livestock, Fishing

Current activities for female:  
 Trade, Livestock, Handcrafts

Self reliance programme in place: 0

## Food : (last food distributions)

Donor	HH	Ind	Update
WFP	395	1790	2015-07-01

## Nutrition as of 29-05-15

Therapeutic Care Program( OTP/SC)	Yes
Blanket Sup. Feeding Program(BSFP)	No
Targeted Sup. Feeding for MAM (TSFP)	Yes
Infant and Young Child Feeding support	Yes
Mental Health Care Practice(MHCP)	Yes
Micro-nutrient supplementation(MMN)	Yes
Ante Natal Care activity(ANC)	Yes
Mental Health Care Practice(MHCP)	Yes
Screening	Yes

For more information, contact UNHCR Yangon Information Management Unit - ricouart@unhcr.org  
 or the national CCCM cluster coordinator- benson@unhcr.org

Total Number of IDP

8,189

Total Number of Households

1,397

## Geographic Data

## GPS Coordinates

State / Region : Rakhine

Latitude : 20.17°

Township : Sittwe

Longitude : 92.83°

Vil. Tract / Town : Bu May

Village/Ward : Dar Paing Ywar Thit

Available Services (in camp, outside the camp, no access) as of 07-01-15

Temp. Learning Space	Inside the camp	School	Outside the camp
Child Friendly Space	Inside the camp	Walkways	0
Health facilities	Outside the camp	Mobile clinic	Inside the camp
Drinking Water	Inside the camp	Market	No access

## Population dynamics

# birth	0
# death	11

## Repartition by Ethnicities (estimated)

Hindu	0%	Muslim	98%
Kaman	2%	Rakhine	0%
Maramagyi	0%		

## Population living in the camp by Age &amp; Gender

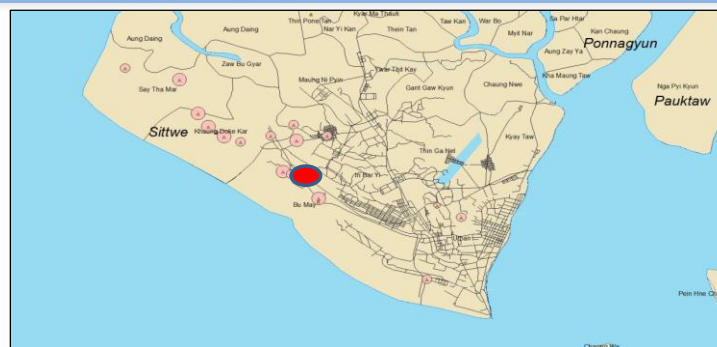
Age (Years)	Male	Female
60+	151	159
26 to 59	971	1057
18 to 25	727	1505
12-17	648	
6 to 11	809	802
0 < 5	652	708

Age is systematically collected in the camp registration book/list

## Population Living in the Camp, by Vulnerability

Serious Medical Conditions	69
Disabilities	94
Single Parent	229
Elderly at Risk	32
Women at Risk	52
Children at Risk	115
Unaccompanied children	32
Separated children	40

Vulnerability is collected in the camp by CCCM focal point



The interagency camp profiling process is an on-going activity promoted, coordinated and delivered by the Shelter/NFI/CCCM Cluster. The information is collected from a number of sources and compiled into a series of a single camp profiles. This document represents single camp profile. The source of information are cluster focal points.



## Access to Services and Sectoral Needs

## Water &amp; Sanitation as of 01-07-15

Water needs coverage (exclu: HH soln:)	100%
Potential Water coverage (inclu: HWTS)	100%
Est: water needs coverage at EoP	100%
Latrine needs coverage	57%
Est: latrine needs coverage at EoP	90%
Bathing space coverage	5%
Est: bathroom needs coverage at EoP	41%
Hygiene kits coverage	0%
Water facilities management	Not yet set up

## Health for the period of January-15

Frequency of mobile clinic; # of day :	12
Average working hours by mobile clinic	5
# identified cases of diarrhoea	15
# identified cases of resp. tract inf.	2
# identified cases of malaria	0
# pregnant women received	48
# clients/family planning received	56
# emergency reproductive health cases	0
# trained community health workers	3
# traditional birth attendants	3
# midwives and auxiliary midwives	1

## Education as of 01-06-15

	#TLS	# Enrolled		# Teacher	
		Male	Female	Male	Female
ECCD	0	0	0	0	0
Primary	5	821	672	14	6
Post-Prim.	0	116	56	4	0
Total	5	937	728	18	6

## Food (Monthly Household Ration)

Rice	13.5 kg	Salt	0.15 kg
Pulses	1.8 kg	Blended Food	1.90 kg
Oil	0.90 lit.		

## Protection as of 01-07-15

Child protection case management	Yes
Case management - adults	Yes
Psychosocial support	Yes
Child friendly spaces (CFS)	Yes
Women and girls centre	NA
GBV related health services	NA
Community based protection group	Yes
Transferring protection skills	Yes
Adolescent assets & life skills building	Yes
Protection monitoring	Yes
Safety audits	NA
Family tracing	Yes

## Shelter/NFI as of

Total number of built shelters	182
Temp & Permanent Shelter Coverage	100%
Individual Shelter Coverage	0%
Household covered by temporary shelters	1456
Total number of Building Shelters	0
Available infrastructure:	
Camp Management Office	1

## Lasts NFI Distributions:

DRC	2015-05-06
Solidarites International	2013-04-09
UNHCR	2012-12-13

## CCCM as of 01-07-15

CCCM Type	Camp Management
CCCM Organization	DRC
Opening Date	0

## Gaps:

Gaps identified by camp managers:  
Registration, Firewood/ fuel, Shelter maintenance

Gaps identified by camp residents:  
Vocational training, 0, 0

## Livelihood:

Current activities for male:  
Trade, Fishing, Other

Current activities for female:  
Trade, Fishing, Manufacturing

Self reliance programme in place:

## Food : (last food distributions)

Donor	HH	Ind	Update
WFP	1334	8410	2015-07-01

## Nutrition as of 29-05-15

Therapeutic Care Program( OTP/SC)	Yes
Blanket Sup. Feeding Program(BSFP)	No
Targeted Sup. Feeding for MAM (TSFP)	Yes
Infant and Young Child Feeding support	Yes
Mental Health Care Practice(MHCP)	Yes
Micro-nutrient supplementation(MMN)	Yes
Ante Natal Care activity(ANC)	Yes
Mental Health Care Practice(MHCP)	Yes
Screening	Yes

For more information, contact UNHCR Yangon Information Management Unit - ricouart@unhcr.org or the national CCCM cluster coordinator- benson@unhcr.org

## Total Number of IDP

4,342

## Total Number of Households

798

## Geographic Data

## GPS Coordinates

State / Region : Rakhine

Latitude : 20.18°

Township : Sittwe

Longitude : 92.82°

Vil. Tract / Town : Khaung Doke Kar

Village/Ward : Khaung Doke Kar

## Available Services (in camp, outside the camp, no access) as of 06-07-15

Temp. Learning Space	Inside the camp	School	Outside the camp
Child Friendly Space	Inside the camp	Walkways	Inside the camp
Health facilities	Inside the camp	Mobile clinic	Inside the camp
Drinking Water	Inside the camp	Market	Outside the camp

## Population dynamics

# birth	2
# death	1

## Repartition by Ethnicities (estimated)

Hindu	0%	Muslim	99%
Kaman	1%	Rakhine	0%
Maramagyi	0%		

## Population living in the camp by Age &amp; Gender

Age (Years)	Male	Female
60+	59	73
26 to 59	581	604
18 to 25	336	465
12-17	320	273
6 to 11	391	358
0 < 5	444	438

Age is systematically collected in the camp registration book/list

## Population Living in the Camp, by Vulnerability

Serious Medical Conditions	12
Disabilities	54
Single Parent	41
Elderly at Risk	27
Women at Risk	210
Children at Risk	2
Unaccompanied children	2
Separated children	1

Vulnerability is collected in the camp by CCCM focal point



The interagency camp profiling process is an on-going activity promoted, coordinated and delivered by the Shelter/NFI/CCCM Cluster. The information is collected from a number of sources and compiled into a series of a single camp profiles. This document represents single camp profile. The source of information are cluster focal points.



## Access to Services and Sectoral Needs

## Water &amp; Sanitation as of 01-07-15

Water needs coverage (exclu: HH soln:)	100%
Potential Water coverage (inclu: HWTS)	100%
Est: water needs coverage at EoP	100%
Latrine needs coverage	100%
Est: latrine needs coverage at EoP	100%
Bathing space coverage	0%
Est: bathroom needs coverage at EoP	100%
Hygiene kits coverage	0%
Water facilities management	Set up but low results

## Health for the period of January-15

Frequency of mobile clinic; # of day :	36
Average working hours by mobile clinic	10
# identified cases of diarrhoea	62
# identified cases of resp. tract inf.	46
# identified cases of malaria	0
# pregnant women received	68
# clients/family planning received	19
# emergency reproductive health cases	0
# trained community health workers	7
# traditional birth attendants	2
# midwives and auxiliary midwives	1

## Education as of 01-06-15

	#TLS	# Enrolled		# Teacher	
		Male	Female	Male	Female
ECCD	0	0	0	0	0
Primary	4	368	274	12	4
Post-Prim.	0	68	48	3	1
Total	4	436	322	15	5

## Food (Monthly Household Ration)

Rice	13.5 kg	Salt	0.15 kg
Pulses	1.8 kg	Blended Food	1.90 kg
Oil	0.90 lit.		

## Protection as of 01-07-15

Child protection case management	Yes
Case management - adults	Yes
Psychosocial support	Yes
Child friendly spaces (CFS)	Yes
Women and girls centre	NA
GBV related health services	NA
Community based protection group	Yes
Transferring protection skills	Yes
Adolescent assets & life skills building	Yes
Protection monitoring	Yes
Safety audits	NA
Family tracing	Yes

## Shelter/NFI as of

Total number of built shelters	100
Temp & Permanent Shelter Coverage	100%
Individual Shelter Coverage	0%
Household covered by temporary shelters	800
Total number of Building Shelters	0
Available infrastructure:	
Camp Management Office	1
MPB Large	2
MPB Small	2
Warehouse	1

## Lasts NFI Distributions:

LWF	2014-06-14
UNHCR	2013-05-27
CDN	2013-01-01

## CCCM as of 01-07-15

CCCM Type	Camp Management
CCCM Organization	Lutheran World Federation
Opening Date	0

Complaints mechanism in place

## Gaps:

Gaps identified by camp managers:  
Access to job opportunities, Vocational Training, 0

Gaps identified by camp residents:  
NFI, Shelter, Wash facilities

## Livelihood:

Current activities for male:  
Trade, Livestock, Other

Current activities for female:  
Trade, Livestock, Other

Self reliance programme in place: 0

## Food : (last food distributions)

Donor	HH	Ind	Update
WFP	299	2704	2015-07-01

## Nutrition as of 29-05-15

Therapeutic Care Program( OTP/SC)	Yes
Blanket Sup. Feeding Program(BSFP)	No
Targeted Sup. Feeding for MAM (TSFP)	Yes
Infant and Young Child Feeding support	Yes
Mental Health Care Practice(MHCP)	Yes
Micro-nutrient supplementation(MMN)	Yes
Ante Natal Care activity(ANC)	Yes
Mental Health Care Practice(MHCP)	Yes
Screening	Yes

For more information, contact UNHCR Yangon Information Management Unit - ricouart@unhcr.org  
or the national CCCM cluster coordinator- benson@unhcr.org



Total Number of IDP

12,178

Total Number of Households

2,436

## Geographic Data

## GPS Coordinates

State / Region : Rakhine  
 Township : Sittwe  
 Vil. Tract / Town : Say Tha Mar  
 Village/Ward : Say Tha Mar Gyi

Latitude : 20.20°  
 Longitude : 92.79°

Available Services (in camp, outside the camp, no access) as of 07-01-15

Temp. Learning Space	Inside the camp	School	Outside the camp
Child Friendly Space	Inside the camp	Walkways	0
Health facilities	Outside the camp	Mobile clinic	Inside the camp
Drinking Water	Inside the camp	Market	Inside the camp

## Population dynamics

# birth : 0  
 # death : 19

## Repartition by Ethnicities (estimated)

Hindu	0%	Muslim	98%
Kaman	2%	Rakhine	0%
Maramgyi	0%		

## Population living in the camp by Age &amp; Gender

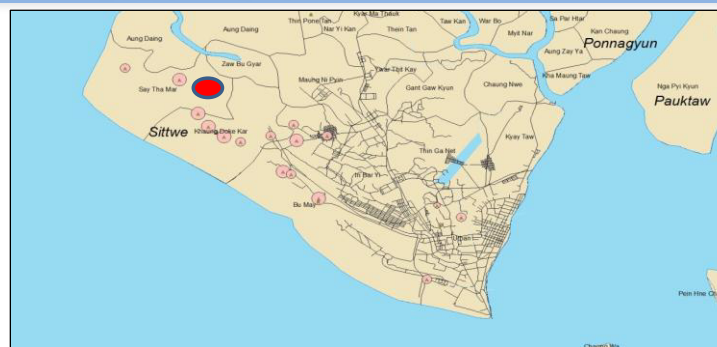
Age (Years)	Male	Female
60+	190	180
26 to 59	1,335	1,475
18 to 25	901	1,275
12-17	852	844
6 to 11	1,337	1,219
0 < 5	1,277	1,293

Age is systematically collected in the camp registration book/list

## Population Living in the Camp, by Vulnerability

Serious Medical Conditions	144
Disabilities	104
Single Parent	466
Elderly at Risk	26
Women at Risk	69
Children at Risk	54
Unaccompanied children	78
Separated children	18

Vulnerability is collected in the camp by CCCM focal point



The interagency camp profiling process is an on-going activity promoted, coordinated and delivered by the Shelter/NFI/CCCM Cluster. The information is collected from a number of sources and compiled into a series of a single camp profiles. This document represents single camp profile. The source of information are cluster focal points.



## Access to Services and Sectoral Needs

## Water &amp; Sanitation as of 01-07-15

Water needs coverage (exclu: HH soln:)	100%
Potential Water coverage (inclu: HWTS)	100%
Est: water needs coverage at EoP	100%
Latrine needs coverage	100%
Est: latrine needs coverage at EoP	100%
Bathing space coverage	0%
Est: bathroom needs coverage at EoP	100%
Hygiene kits coverage	100%
Water facilities management	Set up but low results

## Health for the period of January-15

Frequency of mobile clinic; # of day :	20
Average working hours by mobile clinic	5
# identified cases of diarrhoea	18
# identified cases of resp. tract inf.	105
# identified cases of malaria	1
# pregnant women received	6
# clients/family planning received	0
# emergency reproductive health cases	0
# trained community health workers	5
# traditional birth attendants	4
# midwives and auxiliary midwives	1

## Education as of 01-06-15

	#TLS	# Enrolled		# Teacher	
		Male	Female	Male	Female
ECCD	0	0	0	0	0
Primary	13	642	547	21	6
Post-Prim.	0	0	0	0	0
Total	13	642	547	21	6

## Food (Monthly Household Ration)

Rice	13.5 kg	Salt	0.15 kg
Pulses	1.8 kg	Blended Food	1.90 kg
Oil	0.90 lit.		

## Protection as of 01-07-15

Child protection case management	Yes
Case management - adults	Yes
Psychosocial support	Yes
Child friendly spaces (CFS)	Yes
Women and girls centre	Yes
GBV related health services	NA
Community based protection group	Yes
Transferring protection skills	Yes
Adolescent assets & life skills building	Yes
Protection monitoring	Yes
Safety audits	Yes
Family tracing	Yes

## Shelter/NFI as of

Total number of built shelters	300
Temp & Permanent Shelter Coverage	100%
Individual Shelter Coverage	0%
Household covered by temporary shelters	770
Total number of Building Shelters	0
Available infrastructure:	
MPB Large	2

## Lasts NFI Distributions:

DRC	2014-04-01
UNHCR	2012-12-13

## CCCM as of 01-07-15

CCCM Type	Camp Management
CCCM Organization	DRC
Opening Date	0

Complaints mechanism in place

## Gaps:

Gaps identified by camp managers:  
 Registration, Firewood/ fuel, Shelter maintenance

Gaps identified by camp residents:  
 Vocational training, NFI, 0

## Livelihood:

Current activities for male:  
 Trade, Fishing, Manufacturing

Current activities for female:  
 Trade, Manufacturing, Livestock

Self reliance programme in place:

## Food : (last food distributions)

Donor	HH	Ind	Update
WFP	1746	8589	2015-07-01

## Nutrition as of 29-05-15

Therapeutic Care Program( OTP/SC)	Yes
Blanket Sup. Feeding Program(BSFP)	No
Targeted Sup. Feeding for MAM (TSFP)	Yes
Infant and Young Child Feeding support	Yes
Mental Health Care Practice(MHCP)	Yes
Micro-nutrient supplementation(MMN)	Yes
Ante Natal Care activity(ANC)	Yes
Mental Health Care Practice(MHCP)	Yes
Screening	Yes

For more information, contact UNHCR Yangon Information Management Unit - ricouart@unhcr.org  
 or the national CCCM cluster coordinator- benson@unhcr.org

## Total Number of IDP

11,663

## Total Number of Households

2,145

## Geographic Data

## GPS Coordinates

State / Region : Rakhine

Latitude : 20.16°

Township : Sittwe

Longitude : 92.84°

Vil. Tract / Town : Bu May

Village/Ward : Thea Chaung Ku Lar

## Available Services (in camp, outside the camp, no access) as of 06-07-15

Temp. Learning Space	Inside the camp	School	Outside the camp
Child Friendly Space	No access	Walkways	Inside the camp
Health facilities	Inside the camp	Mobile clinic	Inside the camp
Drinking Water	Inside the camp	Market	Inside the camp

## Population dynamics

# birth	21
# death	5

## Repartition by Ethnicities (estimated)

Hindu	0%	Muslim	79%
Kaman	21%	Rakhine	0%
Maramagyi	0%		

## Population living in the camp by Age &amp; Gender

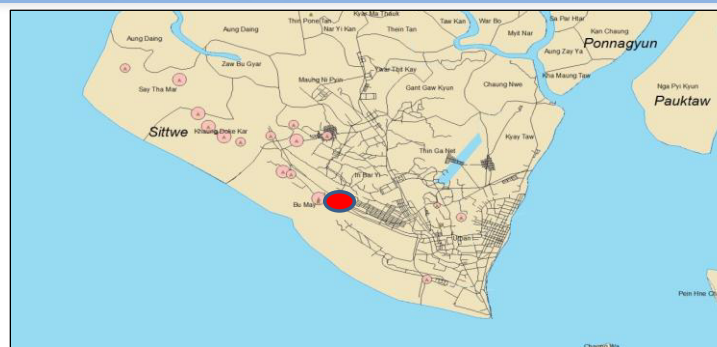
Age (Years)	Male	Female
60+	208	170
26 to 59	1,554	1821
18 to 25	1,002	1217
12-17	960	924
6 to 11	1,027	987
0 < 5	842	951

Age is systematically collected in the camp registration book/list

## Population Living in the Camp, by Vulnerability

Serious Medical Conditions	36
Disabilities	63
Single Parent	29
Elderly at Risk	56
Women at Risk	639
Children at Risk	1
Unaccompanied children	2
Separated children	4

Vulnerability is collected in the camp by CCCM focal point



The interagency camp profiling process is an on-going activity promoted, coordinated and delivered by the Shelter/NFI/CCCM Cluster. The information is collected from a number of sources and compiled into a series of a single camp profiles. This document represents single camp profile. The source of information are cluster focal points.



## Access to Services and Sectoral Needs

## Water &amp; Sanitation as of 01-07-15

Water needs coverage (exclu: HH soln:)	100%
Potential Water coverage (inclu: HWTS)	100%
Est: water needs coverage at EoP	100%
Latrine needs coverage	84%
Est: latrine needs coverage at EoP	90%
Bathing space coverage	1%
Est: bathroom needs coverage at EoP	9%
Hygiene kits coverage	0%
Water facilities management	Not yet set up

## Health for the period of January-15

Frequency of mobile clinic; # of day :	8
Average working hours by mobile clinic	5
# identified cases of diarrhoea	39
# identified cases of resp. tract inf.	5
# identified cases of malaria	0
# pregnant women received	20
# clients/family planning received	0
# emergency reproductive health cases	0
# trained community health workers	3
# traditional birth attendants	2
# midwives and auxiliary midwives	1

## Education as of 01-06-15

	#TLS	# Enrolled	# Teacher
		Male Female	Male Female
ECCD	0	0 0	0 0
Primary	0	1394 1053	11 9
Post-Prim.	0	191 129	5 1
Total	0	1585 1182	16 10

## Food (Monthly Household Ration)

Rice	13.5 kg	Salt	0.15 kg
Pulses	1.8 kg	Blended Food	1.90 kg
Oil	0.90 lit.		

## Protection as of 01-07-15

Child protection case management	Yes
Case management - adults	Yes
Psychosocial support	Yes
Child friendly spaces (CFS)	Yes
Women and girls centre	NA
GBV related health services	NA
Community based protection group	Yes
Transferring protection skills	Yes
Adolescent assets & life skills building	Yes
Protection monitoring	Yes
Safety audits	NA
Family tracing	NA

## Shelter/NFI as of

## Lasts NFI Distributions:

UNHCR	2015-05-07
Muslim Aid	2013-06-26
Solidarites International	2013-02-21

## CCCM as of 01-07-15

CCCM Type	Camp Management
CCCM Organization	Lutheran World Federation
Opening Date	0

Complaints mechanism in place

## Gaps:

Gaps identified by camp managers:  
Health facilities, Wash facilities, Firewood/ fuel

Gaps identified by camp residents:  
School supplies, NFI, Vocational Training

## Livelihood:

Current activities for male:  
Fishing, Trade, Livestock

Current activities for female:  
Livestock, Trade, Handcrafts

Self reliance programme in place: 0

## Food : (last food distributions)

Donor	HH	Ind	Update
WFP	2564	17281	2015-07-01

## Nutrition as of 29-05-15

Therapeutic Care Program( OTP/SC)	Yes
Blanket Sup. Feeding Program(BSFP)	No
Targeted Sup. Feeding for MAM (TSFP)	Yes
Infant and Young Child Feeding support	Yes
Mental Health Care Practice(MHCP)	Yes
Micro-nutrient supplementation(MMN)	Yes
Ante Natal Care activity(ANC)	Yes
Mental Health Care Practice(MHCP)	Yes
Screening	No

For more information, contact UNHCR Yangon Information Management Unit - ricouart@unhcr.org  
or the national CCCM cluster coordinator- benson@unhcr.org

Total Number of IDP

5,656

Total Number of Households

984

## Geographic Data

## GPS Coordinates

State / Region : Rakhine

Latitude : 20.18°

Township : Sittwe

Longitude : 92.83°

Vil. Tract / Town : Bu May

Village/Ward : Kha War De Ywar

Available Services (in camp, outside the camp, no access) as of 30-06-15

Temp. Learning Space	inside the camp	School	outside the camp
Child Friendly Space	inside the camp	Walkways	inside the camp
Health facilities	outside the camp	Mobile clinic	outside the camp
Drinking Water	inside the camp	Market	inside the camp

## Population dynamics

# birth	88
# death	20

## Repartition by Ethnicities (estimated)

Hindu	0%	Muslim	100%
Kaman	0%	Rakhine	0%
Maramagyi	0%		

## Population living in the camp by Age &amp; Gender

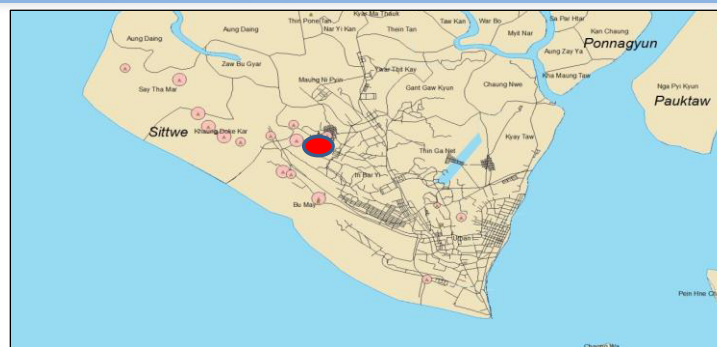
Age (Years)	Male	Female
60+	100	97
26 to 59	810	887
18 to 25	399	508
12-17	399	409
6 to 11	490	470
0 < 5	523	564

Age is systematically collected in the camp registration book/list

## Population Living in the Camp, by Vulnerability

Serious Medical Conditions	107
Disabilities	18
Single Parent	63
Elderly at Risk	37
Women at Risk	49
Children at Risk	25
Unaccompanied children	4
Separated children	12

Vulnerability is collected in the camp by CCCM focal point



The interagency camp profiling process is an on-going activity promoted, coordinated and delivered by the Shelter/NFI/CCCM Cluster. The information is collected from a number of sources and compiled into a series of a single camp profiles. This document represents single camp profile. The source of information are cluster focal points.



## Access to Services and Sectoral Needs

Water & Sanitation	as of	01-07-15
Water needs coverage (exclu: HH soln:)		100%
Potential Water coverage (inclu: HWTS)		100%
Est: water needs coverage at EoP		100%
Latrine needs coverage		18%
Est: latrine needs coverage at EoP		19%
Bathing space coverage		n/a
Est: bathroom needs coverage at EoP		n/a
Hygiene kits coverage		n/a
Water facilities management		Not yet set up

## Health for the period of January-15

Frequency of mobile clinic; # of day :	16
Average working hours by mobile clinic	5
# identified cases of diarrhoea	90
# identified cases of resp. tract inf.	18
# identified cases of malaria	1
# pregnant women received	42
# clients/family planning received	47
# emergency reproductive health cases	0
# trained community health workers	0
# traditional birth attendants	3
# midwives and auxiliary midwives	2

## Education as of 01-06-15

	#TLS	# Enrolled	# Teacher
		Male Female	Male Female
ECCD	0	0 0	0 0
Primary	3	224 209	0 0
Post-Prim.	3	200 225	4 6
Total	6	424 434	4 6

## Food (Monthly Household Ration)

Rice	13.5 kg	Salt	0.15 kg
Pulses	1.8 kg	Blended Food	1.90 kg
Oil	0.90 lit.		

Protection	as of	01-07-15
Child protection case management		Yes
Case management - adults		Yes
Psychosocial support		Yes
Child friendly spaces (CFS)		Yes
Women and girls centre		Yes
GBV related health services		NA
Community based protection group		Yes
Transferring protection skills		Yes
Adolescent assets & life skills building		Yes
Protection monitoring		Yes
Safety audits		Yes
Family tracing		Yes

Shelter/NFI	as of
Total number of built shelters	123
Temp & Permanent Shelter Coverage	51%
Individual Shelter Coverage	49%
Household covered by temporary shelters	984
Total number of Building Shelters	0
<b>Available infrastructure:</b>	
Camp Management Office	1
MPB Large	2
MPB Small	1

## Lasts NFI Distributions:

UNHCR	2015-07-24
Save the Children	2015-03-15
KOICAT	2012-12-03

CCCM	as of	01-07-15
CCCM Type		Focal Point
CCCM Organization		Save the children
Opening Date		0
Complaints mechanism in place		
<b>Gaps:</b>		
Gaps identified by camp managers:		Firewood/ fuel, Health facilities, Access to job opportunities
Gaps identified by camp residents:		Firewood/ fuel, Medicines, Cash/money assistance

## Livelihood:

Current activities for male:	Trade, Other, Other
Current activities for female:	Other, Other, None
Self reliance programme in place:	

## Food : (last food distributions)

Donor	HH	Ind	Update
WFP	1647	8884	2015-07-01

Nutrition	as of	29-05-15
Therapeutic Care Program( OTP/SC)		Yes
Blanket Sup. Feeding Program(BSFP)		No
Targeted Sup. Feeding for MAM (TSFP)		Yes
Infant and Young Child Feeding support		Yes
Mental Health Care Practice(MHCP)		Yes
Micro-nutrient supplementation(MMN)		Yes
Ante Natal Care activity(ANC)		Yes
Mental Health Care Practice(MHCP)		Yes
Screening		Yes

For more information, contact UNHCR Yangon Information Management Unit - ricouart@unhcr.org or the national CCCM cluster coordinator- benson@unhcr.org



Total Number of IDP

462

Total Number of Households

72

## Geographic Data

## GPS Coordinates

State / Region : Rakhine  
 Township : Sittwe  
 Vil. Tract / Town : Set Yon Su Ward  
 Village/Ward : 0

Latitude : 20.15°  
 Longitude : 92.88°

Available Services (in camp, outside the camp, no access) as of 06-07-15

Temp. Learning Space	No access	School	No access
Child Friendly Space	Inside the camp	Walkways	Inside the camp
Health facilities	Inside the camp	Mobile clinic	Inside the camp
Drinking Water	Outside the camp	Market	Outside the camp

## Population dynamics

# birth : 0  
 # death : 0

## Repartition by Ethnicities (estimated)

Hindu	0%	Muslim	0%
Kaman	0%	Rakhine	0%
Maramagyi	100%		

## Population living in the camp by Age &amp; Gender

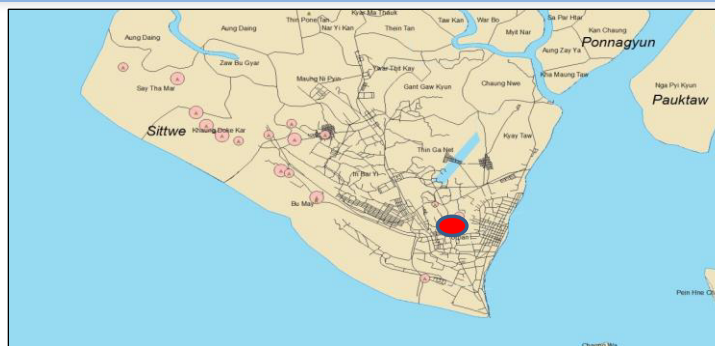
Age (Years)	Male	Female
60+	9	13
26 to 59	79	80
18 to 25	50	53
12-17	39	34
6 to 11	25	31
0 < 5	25	24

Age is systematically collected in the camp registration book/list

## Population Living in the Camp, by Vulnerability

Serious Medical Conditions	4
Disabilities	7
Single Parent	3
Elderly at Risk	5
Women at Risk	10
Children at Risk	0
Unaccompanied children	0
Separated children	0

Vulnerability is collected in the camp by CCCM focal point



The interagency camp profiling process is an on-going activity promoted, coordinated and delivered by the Shelter/NFI/CCCM Cluster. The information is collected from a number of sources and compiled into a series of a single camp profiles. This document represents single camp profile. The source of information are cluster focal points.



## Access to Services and Sectoral Needs

## Water &amp; Sanitation as of 01-07-15

Water needs coverage (exclu: HH soln:)	92%
Potential Water coverage (inclu: HWTS)	100%
Est: water needs coverage at EoP	100%
Latrine needs coverage	100%
Est: latrine needs coverage at EoP	100%
Bathing space coverage	0%
Est: bathroom needs coverage at EoP	0%
Hygiene kits coverage	0%
Water facilities management	Functional and efficient

## Health for the period of January-15

Frequency of mobile clinic; # of day :	16
Average working hours by mobile clinic	5
# identified cases of diarrhoea	11
# identified cases of resp. tract inf.	5
# identified cases of malaria	0
# pregnant women received	17
# clients/family planning received	0
# emergency reproductive health cases	0
# trained community health workers	0
# traditional birth attendants	1
# midwives and auxiliary midwives	1

## Education as of 01-06-15

	#TLS	# Enrolled	# Teacher
		Male Female	Male Female
ECCD	0	0 0	0 0
Primary	0	34 39	0 0
Post-Prim.	0	4 14	1 1
Total	0	38 53	1 1

## Food (Monthly Household Ration)

Rice	13.5 kg	Salt	0.15 kg
Pulses	1.8 kg	Blended Food	1.90 kg
Oil	0.90 lit.		

## Protection as of 01-07-15

Child protection case management	Yes
Case management - adults	Yes
Psychosocial support	Yes
Child friendly spaces (CFS)	Yes
Women and girls centre	NA
GBV related health services	NA
Community based protection group	Yes
Transferring protection skills	Yes
Adolescent assets & life skills building	Yes
Protection monitoring	Yes
Safety audits	Yes
Family tracing	Yes

## Shelter/NFI as of

Total number of built shelters	22
Temp & Permanent Shelter Coverage	100%
Individual Shelter Coverage	100%
Household covered by temporary shelters	292
Total number of Building Shelters	0

## Available infrastructure:

## Lasts NFI Distributions:

UNHCR	2015-04-27
LWF	2014-08-14
Muslim Aid	2013-06-26
ABCD	2013-01-01

## CCCM as of 01-07-15

CCCM Type	Camp Management
CCCM Organization	Lutheran World Federation
Opening Date	0

Complaints mechanism in place

## Gaps:

Gaps identified by camp managers:  
 Access to job opportunities, Vocational Training,  
 School supplies

Gaps identified by camp residents:  
 Access to job opportunities, Water, Electricity

## Livelihood:

Current activities for male:  
 Trade, Livestock, Livestock

Current activities for female:  
 Trade, Livestock, Handcrafts  
 Self reliance programme in place: 0

## Food : (last food distributions)

Donor	HH	Ind	Update
WFP	72	415	2015-07-01

## Nutrition as of 29-05-15

Therapeutic Care Program( OTP/SC)	Yes
Blanket Sup. Feeding Program(BSFP)	No
Targeted Sup. Feeding for MAM (TSFP)	Yes
Infant and Young Child Feeding support	Yes
Mental Health Care Practice(MHCP)	Yes
Micro-nutrient supplementation(MMN)	Yes
Ante Natal Care activity(ANC)	Yes
Mental Health Care Practice(MHCP)	Yes
Screening	No

For more information, contact UNHCR Yangon Information Management Unit - ricouart@unhcr.org  
 or the national CCCM cluster coordinator- benson@unhcr.org

## Total Number of IDP

3,352

## Total Number of Households

624

## Geographic Data

## GPS Coordinates

State / Region : Rakhine  
 Township : Sittwe  
 Vil. Tract / Town : Bu May  
 Village/Ward : Bu May

Latitude : 20.19°  
 Longitude : 92.83°

## Available Services (in camp, outside the camp, no access) as of 30-06-15

Temp. Learning Space	inside the camp	School	outside the camp
Child Friendly Space	outside the camp	Walkways	inside the camp
Health facilities	outside the camp	Mobile clinic	outside the camp
Drinking Water	inside the camp	Market	No access

## Population dynamics

# birth : 65  
 # death : 14

## Repartition by Ethnicities (estimated)

Hindu	0%	Muslim	100%
Kaman	0%	Rakhine	0%
Maramagyi	0%		

## Population living in the camp by Age &amp; Gender

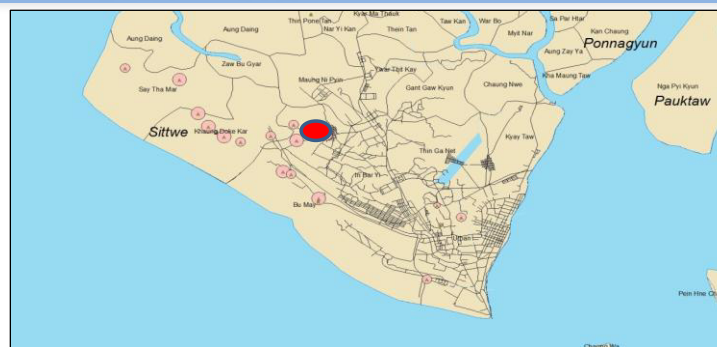
Age (Years)	Male	Female
60+	74	67
26 to 59	439	483
18 to 25	288	348
12-17	218	224
6 to 11	295	276
0 < 5	304	336

Age is systematically collected in the camp registration book/list

## Population Living in the Camp, by Vulnerability

Serious Medical Conditions	73
Disabilities	5
Single Parent	37
Elderly at Risk	9
Women at Risk	28
Children at Risk	6
Unaccompanied children	3
Separated children	3

Vulnerability is collected in the camp by CCCM focal point



The interagency camp profiling process is an on-going activity promoted, coordinated and delivered by the Shelter/NFI/CCCM Cluster. The information is collected from a number of sources and compiled into a series of a single camp profiles. This document represents single camp profile. The source of information are cluster focal points.



## Access to Services and Sectoral Needs

## Water &amp; Sanitation as of 01-07-15

Water needs coverage (exclu: HH soln:)	100%
Potential Water coverage (inclu: HWTS)	100%
Est: water needs coverage at EoP	100%
Latrine needs coverage	100%
Est: latrine needs coverage at EoP	100%
Bathing space coverage	100%
Est: bathroom needs coverage at EoP	100%
Hygiene kits coverage	100%
Water facilities management	Not yet set up

## Health for the period of January-15

Frequency of mobile clinic; # of day :	0
Average working hours by mobile clinic	0
# identified cases of diarrhoea	0
# identified cases of resp. tract inf.	0
# identified cases of malaria	0
# pregnant women received	0
# clients/family planning received	0
# emergency reproductive health cases	0
# trained community health workers	0
# traditional birth attendants	0
# midwives and auxiliary midwives	0

## Education as of 01-06-15

	#TLS	# Enrolled		# Teacher	
		Male	Female	Male	Female
ECCD	0	0	0	0	0
Primary	1	252	219	0	0
Post-Prim.	1	15	27	2	2
Total	2	267	246	2	2

## Food (Monthly Household Ration)

Rice	13.5 kg	Salt	0.15 kg
Pulses	1.8 kg	Blended Food	1.90 kg
Oil	0.90 lit.		

## Protection as of 01-07-15

Child protection case management	Yes
Case management - adults	Yes
Psychosocial support	Yes
Child friendly spaces (CFS)	Yes
Women and girls centre	NA
GBV related health services	NA
Community based protection group	Yes
Transferring protection skills	Yes
Adolescent assets & life skills building	NA
Protection monitoring	Yes
Safety audits	NA
Family tracing	NA

## Shelter/NFI as of

Total number of built shelters	78
Temp & Permanent Shelter Coverage	100%
Individual Shelter Coverage	0%
Household covered by temporary shelters	624
Total number of Building Shelters	0
<b>Available infrastructure:</b>	
Camp Management Office	1
MPB Large	1
MPB Small	1

## Lasts NFI Distributions:

UNHCR 2015-07-09

## CCCM as of 01-07-15

CCCM Type	Focal Point
CCCM Organization	Save the children
Opening Date	0

Complaints mechanism in place

## Gaps:

Gaps identified by camp managers:  
 Firewood/ fuel, Health facilities, Access to job opportunities

Gaps identified by camp residents:  
 Firewood/ fuel, Health facilities, Access to job opportunities

## Livelihood:

Current activities for male:  
 Other, Trade, Manufacturing

Current activities for female:  
 Trade, Other, None

Self reliance programme in place:

## Food : (last food distributions)

Donor	HH	Ind	Update
WFP	809	4621	2015-07-01

## Nutrition as of 29-05-15

Therapeutic Care Program( OTP/SC)	Yes
Blanket Sup. Feeding Program(BSFP)	No
Targeted Sup. Feeding for MAM (TSFP)	Yes
Infant and Young Child Feeding support	Yes
Mental Health Care Practice(MHCP)	Yes
Micro-nutrient supplementation(MMN)	Yes
Ante Natal Care activity(ANC)	Yes
Mental Health Care Practice(MHCP)	Yes
Screening	Yes

For more information, contact UNHCR Yangon Information Management Unit - ricouart@unhcr.org  
 or the national CCCM cluster coordinator- benson@unhcr.org

Total Number of IDP	640
Total Number of Households	151

Geographic Data		GPS Coordinates	
State / Region	Rakhine	Latitude	: 20.16°
Township	Sittwe	Longitude	: 92.88°
Vil. Tract / Town	Set Yon Su Ward		
Village/Ward	: 0		

**Available Services** (in camp, outside the camp, no access) as of 06-07-15

Temp. Learning Space	Inside the camp	School	Inside the camp
Child Friendly Space	Inside the camp	Walkways	Inside the camp
Health facilities	Inside the camp	Mobile clinic	Inside the camp
Drinking Water	Outside the camp	Market	No access

### Population dynamics

# birth	0
# death	0

### Repartition by Ethnicities (estimated)

Hindu	0%	Muslim	0%
Kaman	0%	Rakhine	100%
Maramgyi	0%		

### Population living in the camp by Age & Gender

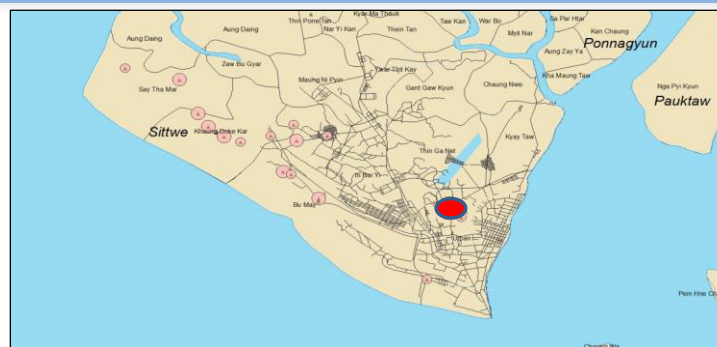
Age (Years)	Male	Female
60+	7	23
26 to 59	121	124
18 to 25	40	51
12-17	40	36
6 to 11	41	44
0 < 5	50	63

Age is systematically collected in the camp registration book/list

### Population Living in the Camp, by Vulnerability

Serious Medical Conditions	3
Disabilities	7
Single Parent	8
Elderly at Risk	14
Women at Risk	32
Children at Risk	2
Unaccompanied children	0
Separated children	0

Vulnerability is collected in the camp by CCCM focal point



The interagency camp profiling process is an on-going activity promoted, coordinated and delivered by the Shelter/NFI/CCCM Cluster. The information is collected from a number of sources and compiled into a series of a single camp profiles. This document represents single camp profile. The source of information are cluster focal points.



### Access to Services and Sectoral Needs

#### Water & Sanitation as of 01-07-15

Water needs coverage (exclu: HH soln:)	100%
Potential Water coverage (inclu: HWTS)	100%
Est: water needs coverage at EoP	100%
Latrine needs coverage	100%
Est: latrine needs coverage at EoP	100%
Bathing space coverage	58%
Est: bathroom needs coverage at EoP	26%
Hygiene kits coverage	0%
Water facilities management	Functional and efficient

#### Health for the period of January-15

Frequency of mobile clinic; # of day :	20
Average working hours by mobile clinic	5
# identified cases of diarrhoea	15
# identified cases of resp. tract inf.	3
# identified cases of malaria	0
# pregnant women received	7
# clients/family planning received	0
# emergency reproductive health cases	0
# trained community health workers	0
# traditional birth attendants	2
# midwives and auxiliary midwives	1

#### Education as of 01-06-15

	#TLS	# Enrolled		# Teacher	
		Male	Female	Male	Female
ECCD	0	0	0	0	0
Primary	0	63	46	0	0
Post-Prim.	0	0	10	1	1
<b>Total</b>	<b>0</b>	<b>63</b>	<b>56</b>	<b>1</b>	<b>1</b>

#### Food (Monthly Household Ration)

Rice	13.5 kg	Salt	0.15 kg
Pulses	1.8 kg	Blended Food	1.90 kg
Oil	0.90 lit.		

#### Protection as of 01-07-15

Child protection case management	Yes
Case management - adults	Yes
Psychosocial support	Yes
Child friendly spaces (CFS)	Yes
Women and girls centre	Yes
GBV related health services	NA
Community based protection group	Yes
Transferring protection skills	Yes
Adolescent assets & life skills building	Yes
Protection monitoring	Yes
Safety audits	Yes
Family tracing	Yes

#### Shelter/NFI as of

Total number of built shelters	22
Temp & Permanent Shelter Coverage	100%
Individual Shelter Coverage	0%
Household covered by temporary shelters	176
Total number of Building Shelters	0

#### Available infrastructure:

#### Lasts NFI Distributions:

UNHCR	2015-04-27
LWF	2014-08-14

#### CCCM as of 01-07-15

CCCM Type	Camp Management
CCCM Organization	Lutheran World Federation
Opening Date	0

Complaints mechanism in place

#### Gaps:

Gaps identified by camp managers:  
Wash facilities, 0, Health facilities

Gaps identified by camp residents:  
School facilities, Access to job opportunities, Wash facilities

#### Livelihood:

Current activities for male:  
Livestock, Handcrafts, Livestock

Current activities for female:  
Trade, Livestock, Trade

Self reliance programme in place: 0

#### Food : (last food distributions)

Donor	HH	Ind	Update
WFP	151	586	2015-07-01

#### Nutrition as of 29-05-15

Therapeutic Care Program( OTP/SC)	Yes
Blanket Sup. Feeding Program(BSFP)	No
Targeted Sup. Feeding for MAM (TSFP)	Yes
Infant and Young Child Feeding support	Yes
Mental Health Care Practice(MHCP)	Yes
Micro-nutrient supplementation(MMN)	Yes
Ante Natal Care activity(ANC)	Yes
Mental Health Care Practice(MHCP)	Yes
Screening	No

For more information, contact UNHCR Yangon Information Management Unit - ricouart@unhcr.org or the national CCCM cluster coordinator- benson@unhcr.org



Total Number of IDP

3,389

Total Number of Households

649

## Geographic Data

## GPS Coordinates

State / Region : Rakhine  
 Township : Sittwe  
 Vil. Tract / Town : Say Tha Mar  
 Village/Ward : Ohn Taw Shey

Latitude : 20.21°  
 Longitude : 92.77°

Available Services (in camp, outside the camp, no access) as of 07-01-15

Temp. Learning Space	Inside the camp	School	Outside the camp
Child Friendly Space	Inside the camp	Walkways	0
Health facilities	Outside the camp	Mobile clinic	Inside the camp
Drinking Water	Inside the camp	Market	No access

## Population dynamics

# birth : 0  
 # death : 5

## Repartition by Ethnicities (estimated)

Hindu	0%	Muslim	95%
Kaman	5%	Rakhine	0%
Maramagyi	0%		

## Population living in the camp by Age &amp; Gender

Age (Years)	Male	Female
60+	45	27
26 to 59	364	375
18 to 25	243	291
12-17	259	224
6 to 11	429	365
0 < 5	352	415

Age is systematically collected in the camp registration book/list

## Population Living in the Camp, by Vulnerability

Serious Medical Conditions	49
Disabilities	32
Single Parent	82
Elderly at Risk	12
Women at Risk	26
Children at Risk	100
Unaccompanied children	1
Separated children	20

Vulnerability is collected in the camp by CCCM focal point



The interagency camp profiling process is an on-going activity promoted, coordinated and delivered by the Shelter/NFI/CCCM Cluster. The information is collected from a number of sources and compiled into a series of a single camp profiles. This document represents single camp profile. The source of information are cluster focal points.



## Access to Services and Sectoral Needs

## Water &amp; Sanitation as of 01-07-15

Water needs coverage (exclu: HH soln:)	100%
Potential Water coverage (inclu: HWTS)	100%
Est: water needs coverage at EoP	100%
Latrine needs coverage	93%
Est: latrine needs coverage at EoP	100%
Bathing space coverage	0%
Est: bathroom needs coverage at EoP	100%
Hygiene kits coverage	0%
Water facilities management	Set up but low results

## Health for the period of January-15

Frequency of mobile clinic; # of day :	0
Average working hours by mobile clinic	0
# identified cases of diarrhoea	0
# identified cases of resp. tract inf.	0
# identified cases of malaria	0
# pregnant women received	0
# clients/family planning received	0
# emergency reproductive health cases	0
# trained community health workers	0
# traditional birth attendants	0
# midwives and auxiliary midwives	0

## Education as of 01-06-15

	#TLS	# Enrolled		# Teacher	
		Male	Female	Male	Female
ECCD	0	0	0	0	0
Primary	3	474	315	0	0
Post-Prim.	0	0	0	0	0
Total	3	474	315	0	0

## Food (Monthly Household Ration)

Rice	13.5 kg	Salt	0.15 kg
Pulses	1.8 kg	Blended Food	1.90 kg
Oil	0.90 lit.		

## Protection as of 01-07-15

Child protection case management	Yes
Case management - adults	Yes
Psychosocial support	Yes
Child friendly spaces (CFS)	Yes
Women and girls centre	Yes
GBV related health services	NA
Community based protection group	Yes
Transferring protection skills	Yes
Adolescent assets & life skills building	Yes
Protection monitoring	Yes
Safety audits	NA
Family tracing	NA

## Shelter/NFI as of

Total number of built shelters	80
Temp & Permanent Shelter Coverage	99%
Individual Shelter Coverage	0%
Household covered by temporary shelters	640
Total number of Building Shelters	0
Available infrastructure:	
Warehouse	1

## Lasts NFI Distributions:

UNHCR 2015-05-20

## CCCM as of 01-07-15

CCCM Type	Camp Management
CCCM Organization	DRC
Opening Date	0

Complaints mechanism in place

## Gaps:

Gaps identified by camp managers:  
 Registration, Firewood/ fuel, Shelter maintenance

Gaps identified by camp residents:  
 Vocational training, 0, 0

## Livelihood:

Current activities for male:  
 Fishing, Trade, Livestock

Current activities for female:  
 Livestock, Manufacturing, Trade

Self reliance programme in place:

## Food : (last food distributions)

Donor	HH	Ind	Update
WFP	474	2483	2015-07-01

## Nutrition as of 29-05-15

Therapeutic Care Program( OTP/SC)	Yes
Blanket Sup. Feeding Program(BSFP)	No
Targeted Sup. Feeding for MAM (TSFP)	Yes
Infant and Young Child Feeding support	Yes
Mental Health Care Practice(MHCP)	Yes
Micro-nutrient supplementation(MMN)	Yes
Ante Natal Care activity(ANC)	No
Mental Health Care Practice(MHCP)	Yes
Screening	No

For more information, contact UNHCR Yangon Information Management Unit - ricouart@unhcr.org  
 or the national CCCM cluster coordinator- benson@unhcr.org

## Total Number of IDP

1,282

## Total Number of Households

249

## Geographic Data

## GPS Coordinates

State / Region : Rakhine

Latitude : 20.15°

Township : Sittwe

Longitude : 92.89°

Vil. Tract / Town : Urban

Village/Ward : Sut Yoe Kya Ward

## Available Services (in camp, outside the camp, no access) as of 30-06-15

Temp. Learning Space	inside the camp	School	outside the camp
Child Friendly Space	inside the camp	Walkways	inside the camp
Health facilities	inside the camp	Mobile clinic	inside the camp
Drinking Water	inside the camp	Market	outside the camp

## Population dynamics

# birth	25
# death	6

## Repartition by Ethnicities (estimated)

Hindu	0%	Muslim	0%
Kaman	0%	Rakhine	100%
Maramgyi	0%		

## Population living in the camp by Age &amp; Gender

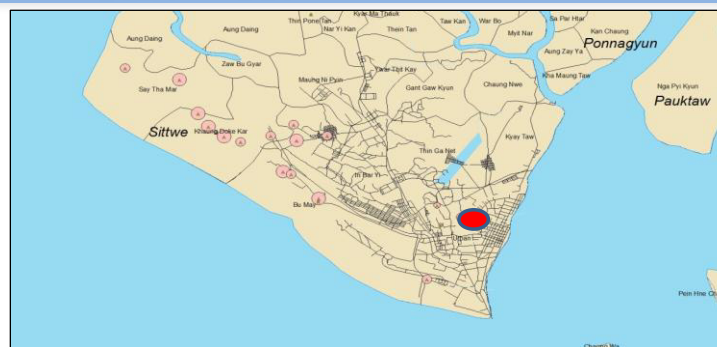
Age (Years)	Male	Female
60+	40	59
26 to 59	265	264
18 to 25	92	117
12-17	72	95
6 to 11	84	73
0 < 5	65	56

Age is systematically collected in the camp registration book/list

## Population Living in the Camp, by Vulnerability

Serious Medical Conditions	21
Disabilities	7
Single Parent	6
Elderly at Risk	23
Women at Risk	10
Children at Risk	3
Unaccompanied children	
Separated children	

Vulnerability is collected in the camp by CCCM focal point



The interagency camp profiling process is an on-going activity promoted, coordinated and delivered by the Shelter/NFI/CCCM Cluster. The information is collected from a number of sources and compiled into a series of a single camp profiles. This document represents single camp profile. The source of information are cluster focal points.



## Access to Services and Sectoral Needs

## Water &amp; Sanitation as of 01-07-15

Water needs coverage (exclu: HH soln:)	100%
Potential Water coverage (inclu: HWTS)	100%
Est: water needs coverage at EoP	100%
Latrine needs coverage	100%
Est: latrine needs coverage at EoP	100%
Bathing space coverage	0%
Est: bathroom needs coverage at EoP	0%
Hygiene kits coverage	0%
Water facilities management	Set up but low results

## Health for the period of January-15

Frequency of mobile clinic; # of day :	16
Average working hours by mobile clinic	5
# identified cases of diarrhoea	12
# identified cases of resp. tract inf.	9
# identified cases of malaria	0
# pregnant women received	24
# clients/family planning received	0
# emergency reproductive health cases	0
# trained community health workers	1
# traditional birth attendants	7
# midwives and auxiliary midwives	1

## Education as of 01-06-15

	#TLS	# Enrolled	# Teacher
		Male Female	Male Female
ECCD	0	0 0	0 0
Primary	1	20 26	0 0
Post-Prim.	0	7 7	1 1
Total	1	27 33	1 1

## Food (Monthly Household Ration)

Rice	13.5 kg	Salt	0.15 kg
Pulses	1.8 kg	Blended Food	1.90 kg
Oil	0.90 lit.		

## Protection as of 01-07-15

Child protection case management	Yes
Case management - adults	Yes
Psychosocial support	Yes
Child friendly spaces (CFS)	Yes
Women and girls centre	Yes
GBV related health services	NA
Community based protection group	Yes
Transferring protection skills	Yes
Adolescent assets & life skills building	Yes
Protection monitoring	Yes
Safety audits	Yes
Family tracing	Yes

## Shelter/NFI as of

Total number of built shelters	250
Temp & Permanent Shelter Coverage	100%
Individual Shelter Coverage	0%
Household covered by temporary shelters	250
Total number of Building Shelters	0
<b>Available infrastructure:</b>	
Camp Management Office	1
MPB Large	1
Warehouse	1

## Lasts NFI Distributions:

UNHCR	2015-05-12
CDN	2015-02-20

## CCCM as of 01-07-15

CCCM Type	Focal Point
CCCM Organization	Save the children
Opening Date	0
Complaints mechanism in place	
<b>Gaps:</b>	
Gaps identified by camp managers:	
Access to job opportunities, Cash/money assistance,	0

Gaps identified by camp residents:  
Cash/money assistance, 0, Vocational Training

## Livelihood:

Current activities for male:  
Trade, Other, Other

Current activities for female:  
Trade, Other, Other

Self reliance programme in place:

## Food : (last food distributions)

Donor	HH	Ind	Update
WFP	615	3110	2015-07-01

## Nutrition as of 29-05-15

Therapeutic Care Program( OTP/SC)	Yes
Blanket Sup. Feeding Program(BSFP)	No
Targeted Sup. Feeding for MAM (TSFP)	Yes
Infant and Young Child Feeding support	Yes
Mental Health Care Practice(MHCP)	Yes
Micro-nutrient supplementation(MMN)	Yes
Ante Natal Care activity(ANC)	Yes
Mental Health Care Practice(MHCP)	Yes
Screening	No

For more information, contact UNHCR Yangon Information Management Unit - ricouart@unhcr.org  
or the national CCCM cluster coordinator- benson@unhcr.org

## Total Number of IDP

2,200

## Total Number of Households

418

## Geographic Data

## GPS Coordinates

State / Region : Rakhine

Latitude : 20.15°

Township : Sittwe

Longitude : 92.89°

Vil. Tract / Town : Urban

Village/Ward : Sut Yoe Kya Ward

## Available Services (in camp, outside the camp, no access) as of 30-06-15

Temp. Learning Space	No access	School	inside the camp
Child Friendly Space	inside the camp	Walkways	inside the camp
Health facilities	outside the camp	Mobile clinic	outside the camp
Drinking Water	inside the camp	Market	inside the camp

## Population dynamics

# birth	22
# death	8

## Repartition by Ethnicities (estimated)

Hindu	0%	Muslim	0%
Kaman	0%	Rakhine	100%
Maramagyi	0%		

## Population living in the camp by Age &amp; Gender

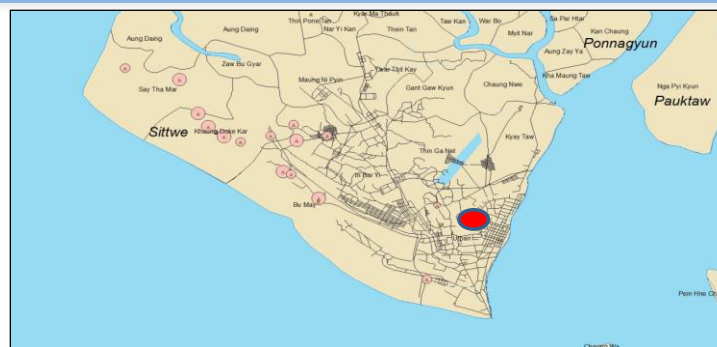
Age (Years)	Male	Female
60+	65	92
26 to 59	434	445
18 to 25	184	199
12-17	148	144
6 to 11	127	128
0 < 5	112	122

Age is systematically collected in the camp registration book/list

## Population Living in the Camp, by Vulnerability

Serious Medical Conditions	39
Disabilities	21
Single Parent	31
Elderly at Risk	89
Women at Risk	26
Children at Risk	37
Unaccompanied children	3
Separated children	3

Vulnerability is collected in the camp by CCCM focal point



The interagency camp profiling process is an on-going activity promoted, coordinated and delivered by the Shelter/NFI/CCCM Cluster. The information is collected from a number of sources and compiled into a series of a single camp profiles. This document represents single camp profile. The source of information are cluster focal points.



## Access to Services and Sectoral Needs

## Water &amp; Sanitation as of 01-07-15

Water needs coverage (exclu: HH soln:)	47%
Potential Water coverage (inclu: HWTS)	100%
Est: water needs coverage at EoP	100%
Latrine needs coverage	100%
Est: latrine needs coverage at EoP	100%
Bathing space coverage	100%
Est: bathroom needs coverage at EoP	0%
Hygiene kits coverage	0%
Water facilities management	Set up but low results

## Health for the period of January-15

Frequency of mobile clinic; # of day :	0
Average working hours by mobile clinic	0
# identified cases of diarrhoea	0
# identified cases of resp. tract inf.	0
# identified cases of malaria	0
# pregnant women received	0
# clients/family planning received	0
# emergency reproductive health cases	0
# trained community health workers	0
# traditional birth attendants	0
# midwives and auxiliary midwives	0

## Education as of 01-06-15

	#TLS	# Enrolled		# Teacher	
		Male	Female	Male	Female
ECCD	0	0	0	0	0
Primary	2	299	269	0	0
Post-Prim.	0	21	21	1	1
Total	2	320	290	1	1

## Food (Monthly Household Ration)

Rice	13.5 kg	Salt	0.15 kg
Pulses	1.8 kg	Blended Food	1.90 kg
Oil	0.90 lit.		

## Protection as of 01-07-15

Child protection case management	Yes
Case management - adults	Yes
Psychosocial support	Yes
Child friendly spaces (CFS)	Yes
Women and girls centre	Yes
GBV related health services	NA
Community based protection group	Yes
Transferring protection skills	Yes
Adolescent assets & life skills building	Yes
Protection monitoring	Yes
Safety audits	Yes
Family tracing	Yes

## Shelter/NFI as of

Total number of built shelters	419
Temp & Permanent Shelter Coverage	100%
Individual Shelter Coverage	0%
Household covered by temporary shelters	419
Total number of Building Shelters	0
Available infrastructure:	
Warehouse	1

## Lasts NFI Distributions:

UNHCR	2015-04-27
-------	------------

## CCCM as of 01-07-15

CCCM Type	Focal Point
CCCM Organization	UNHCR
Opening Date	0
Complaints mechanism in place	
Gaps:	
Gaps identified by camp managers:	
Access to job opportunities, Cash/money assistance,	0

Gaps identified by camp residents:  
Cash/money assistance, 0, Vocational Training

## Livelihood:

Current activities for male:  
Trade, Other, Other

Current activities for female:  
Trade, Other, Other

Self reliance programme in place:

## Food : (last food distributions)

Donor	HH	Ind	Update
WFP		0	2015-07-01

## Nutrition as of 29-05-15

Therapeutic Care Program( OTP/SC)	Yes
Blanket Sup. Feeding Program(BSFP)	No
Targeted Sup. Feeding for MAM (TSFP)	Yes
Infant and Young Child Feeding support	Yes
Mental Health Care Practice(MHCP)	Yes
Micro-nutrient supplementation(MMN)	Yes
Ante Natal Care activity(ANC)	Yes
Mental Health Care Practice(MHCP)	Yes
Screening	No

For more information, contact UNHCR Yangon Information Management Unit - ricouart@unhcr.org or the national CCCM cluster coordinator- benson@unhcr.org



## Total Number of IDP

4,851

## Total Number of Households

997

## Geographic Data

## GPS Coordinates

State / Region : Rakhine  
 Township : Sittwe  
 Vil. Tract / Town : Khaung Doke Kar  
 Village/Ward : Baw Du Hpa

Latitude : 20.18°  
 Longitude : 92.81°

## Available Services (in camp, outside the camp, no access) as of 07-01-15

Temp. Learning Space	Inside the camp	School	Outside the camp
Child Friendly Space	Inside the camp	Walkways	0
Health facilities	Outside the camp	Mobile clinic	Inside the camp
Drinking Water	Inside the camp	Market	Outside the camp

## Population dynamics

# birth : 0  
 # death : 7

## Repartition by Ethnicities (estimated)

Hindu	0%	Muslim	98%
Kaman	2%	Rakhine	0%
Maramagyi	0%		

## Population living in the camp by Age &amp; Gender

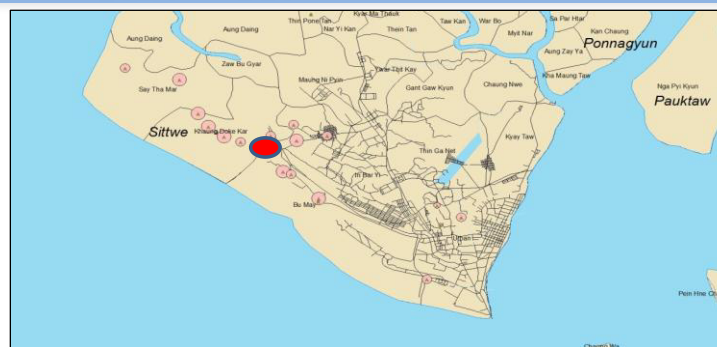
Age (Years)	Male	Female
60+	75	78
26 to 59	686	704
18 to 25	418	872
12-17	360	
6 to 11	457	387
0 < 5	395	419

Age is systematically collected in the camp registration book/list

## Population Living in the Camp, by Vulnerability

Serious Medical Conditions	40
Disabilities	28
Single Parent	124
Elderly at Risk	15
Women at Risk	42
Children at Risk	20
Unaccompanied children	12
Separated children	14

Vulnerability is collected in the camp by CCCM focal point



The interagency camp profiling process is an on-going activity promoted, coordinated and delivered by the Shelter/NFI/CCCM Cluster. The information is collected from a number of sources and compiled into a series of a single camp profiles. This document represents single camp profile. The source of information are cluster focal points.



## Access to Services and Sectoral Needs

## Water &amp; Sanitation as of 01-07-15

Water needs coverage (exclu: HH soln:)	100%
Potential Water coverage (inclu: HWTS)	100%
Est: water needs coverage at EoP	100%
Latrine needs coverage	73%
Est: latrine needs coverage at EoP	100%
Bathing space coverage	n/a
Est: bathroom needs coverage at EoP	n/a
Hygiene kits coverage	n/a
Water facilities management	Not yet set up

## Health for the period of January-15

Frequency of mobile clinic; # of day :	20
Average working hours by mobile clinic	5
# identified cases of diarrhoea	117
# identified cases of resp. tract inf.	80
# identified cases of malaria	0
# pregnant women received	43
# clients/family planning received	1
# emergency reproductive health cases	0
# trained community health workers	4
# traditional birth attendants	3
# midwives and auxiliary midwives	1

## Education as of 01-06-15

	#TLS	# Enrolled	# Teacher
		Male Female	Male Female
ECCD	0	0 0	0 0
Primary	4	382 318	0 0
Post-Prim.	1	13 16	2 2
Total	5	395 334	2 2

## Food (Monthly Household Ration)

Rice	13.5 kg	Salt	0.15 kg
Pulses	1.8 kg	Blended Food	1.90 kg
Oil	0.90 lit.		

## Protection as of 01-07-15

Child protection case management	Yes
Case management - adults	Yes
Psychosocial support	Yes
Child friendly spaces (CFS)	Yes
Women and girls centre	Yes
GBV related health services	NA
Community based protection group	Yes
Transferring protection skills	Yes
Adolescent assets & life skills building	NA
Protection monitoring	Yes
Safety audits	Yes
Family tracing	Yes

## Shelter/NFI as of

Total number of built shelters	127
Temp & Permanent Shelter Coverage	100%
Individual Shelter Coverage	0%
Household covered by temporary shelters	1016
Total number of Building Shelters	0
Available infrastructure:	
Camp Management Office	1

## Lasts NFI Distributions:

DRC 2014-08-26

## CCCM as of 01-07-15

CCCM Type	Camp Management
CCCM Organization	DRC
Opening Date	0

## Gaps:

Gaps identified by camp managers:  
 Registration, Firewood/ fuel, Shelter maintenance

Gaps identified by camp residents:  
 Vocational training, 0, 0

## Livelihood:

Current activities for male:  
 Fishing, Trade, Livestock

Current activities for female:  
 Trade, Livestock, Manufacturing

Self reliance programme in place:

## Food : (last food distributions)

Donor	HH	Ind	Update
WFP	2286	11516	2015-07-01

## Nutrition as of 29-05-15

Therapeutic Care Program( OTP/SC)	Yes
Blanket Sup. Feeding Program(BSFP)	No
Targeted Sup. Feeding for MAM (TSFP)	Yes
Infant and Young Child Feeding support	Yes
Mental Health Care Practice(MHCP)	Yes
Micro-nutrient supplementation(MMN)	Yes
Ante Natal Care activity(ANC)	Yes
Mental Health Care Practice(MHCP)	Yes
Screening	Yes

For more information, contact UNHCR Yangon Information Management Unit - ricouart@unhcr.org  
 or the national CCCM cluster coordinator- benson@unhcr.org

## Total Number of IDP

6,917

## Total Number of Households

1,297

## Geographic Data

## GPS Coordinates

State / Region : Rakhine

Latitude : 20.18°

Township : Sittwe

Longitude : 92.81°

Vil. Tract / Town : Khaung Doke Kar

Village/Ward : Baw Du Hpa

## Available Services (in camp, outside the camp, no access) as of 07-01-15

Temp. Learning Space	Inside the camp	School	Outside the camp
Child Friendly Space	Inside the camp	Walkways	0
Health facilities	Outside the camp	Mobile clinic	Inside the camp
Drinking Water	Inside the camp	Market	Outside the camp

## Population dynamics

# birth	0
# death	7

## Repartition by Ethnicities (estimated)

Hindu	0%	Muslim	98%
Kaman	2%	Rakhine	0%
Maramagyi	0%		

## Population living in the camp by Age &amp; Gender

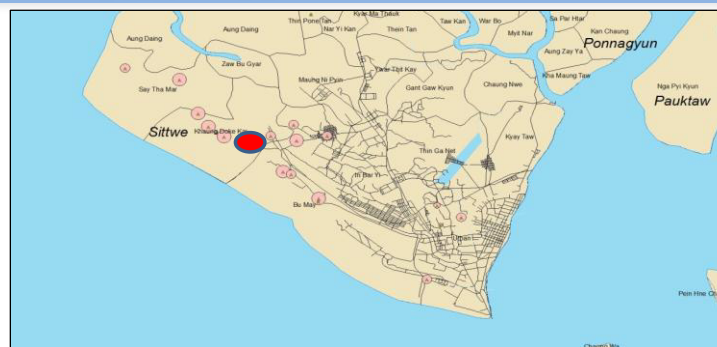
Age (Years)	Male	Female
60+	103	110
26 to 59	843	838
18 to 25	631	1264
12-17	504	
6 to 11	655	614
0 < 5	669	686

Age is systematically collected in the camp registration book/list

## Population Living in the Camp, by Vulnerability

Serious Medical Conditions	55
Disabilities	45
Single Parent	185
Elderly at Risk	26
Women at Risk	21
Children at Risk	45
Unaccompanied children	45
Separated children	14

Vulnerability is collected in the camp by CCCM focal point



The interagency camp profiling process is an on-going activity promoted, coordinated and delivered by the Shelter/NFI/CCCM Cluster. The information is collected from a number of sources and compiled into a series of a single camp profiles. This document represents single camp profile. The source of information are cluster focal points.



## Access to Services and Sectoral Needs

## Water &amp; Sanitation as of 01-07-15

Water needs coverage (exclu: HH soln:)	100%
Potential Water coverage (inclu: HWTS)	100%
Est: water needs coverage at EoP	100%
Latrine needs coverage	88%
Est: latrine needs coverage at EoP	90%
Bathing space coverage	3%
Est: bathroom needs coverage at EoP	23%
Hygiene kits coverage	0%
Water facilities management	Not yet set up

## Health for the period of January-15

Frequency of mobile clinic; # of day :	0
Average working hours by mobile clinic	0
# identified cases of diarrhoea	0
# identified cases of resp. tract inf.	0
# identified cases of malaria	0
# pregnant women received	0
# clients/family planning received	0
# emergency reproductive health cases	0
# trained community health workers	0
# traditional birth attendants	0
# midwives and auxiliary midwives	0

## Education as of 01-06-15

	#TLS	# Enrolled	# Teacher
		Male Female	Male Female
ECCD	0	0 0	0 0
Primary	7	399 351	0 0
Post-Prim.	1	41 17	2 2
Total	8	440 368	2 2

## Food (Monthly Household Ration)

Rice	13.5 kg	Salt	0.15 kg
Pulses	1.8 kg	Blended Food	1.90 kg
Oil	0.90 lit.		

## Protection as of 01-07-15

Child protection case management	Yes
Case management - adults	Yes
Psychosocial support	Yes
Child friendly spaces (CFS)	Yes
Women and girls centre	Yes
GBV related health services	NA
Community based protection group	Yes
Transferring protection skills	Yes
Adolescent assets & life skills building	NA
Protection monitoring	Yes
Safety audits	Yes
Family tracing	Yes

## Shelter/NFI as of

Total number of built shelters	154
Temp & Permanent Shelter Coverage	100%
Individual Shelter Coverage	0%
Household covered by temporary shelters	1312
Total number of Building Shelters	0
<b>Available infrastructure:</b>	
Camp Management Office	1
MPB Large	1

## Lasts NFI Distributions:

DRC 2014-08-28

## CCCM as of 01-07-15

CCCM Type	Camp Management
CCCM Organization	DRC
Opening Date	0

## Gaps:

Gaps identified by camp managers:  
Registration, Firewood/ fuel, Shelter maintenance

Gaps identified by camp residents:  
Vocational training, 0, 0

## Livelihood:

Current activities for male:  
Fishing, Trade, Livestock

Current activities for female:  
Trade, Livestock, Manufacturing

Self reliance programme in place:

## Food : (last food distributions)

Donor	HH	Ind	Update
WFP		0	2015-07-01

## Nutrition as of 29-05-15

Therapeutic Care Program( OTP/SC)	Yes
Blanket Sup. Feeding Program(BSFP)	No
Targeted Sup. Feeding for MAM (TSFP)	Yes
Infant and Young Child Feeding support	Yes
Mental Health Care Practice(MHCP)	Yes
Micro-nutrient supplementation(MMN)	Yes
Ante Natal Care activity(ANC)	Yes
Mental Health Care Practice(MHCP)	Yes
Screening	Yes

For more information, contact UNHCR Yangon Information Management Unit - ricouart@unhcr.org or the national CCCM cluster coordinator- benson@unhcr.org

## Total Number of IDP

13,655

## Total Number of Households

2,629

## Geographic Data

## GPS Coordinates

State / Region : Rakhine

Latitude : 20.19°

Township : Sittwe

Longitude : 92.80°

Vil. Tract / Town : Khaung Doke Kar

Village/Ward : Baw Du Hpa

## Available Services (in camp, outside the camp, no access) as of 07-01-15

Temp. Learning Space	Inside the camp	School	Outside the camp
Child Friendly Space	Inside the camp	Walkways	0
Health facilities	Outside the camp	Mobile clinic	Inside the camp
Drinking Water	Inside the camp	Market	No access

## Population dynamics

# birth 0  
# death 19

## Repartition by Ethnicities (estimated)

Hindu	0%	Muslim	97%
Kaman	3%	Rakhine	0%
Maramagyi	0%		

## Population living in the camp by Age &amp; Gender

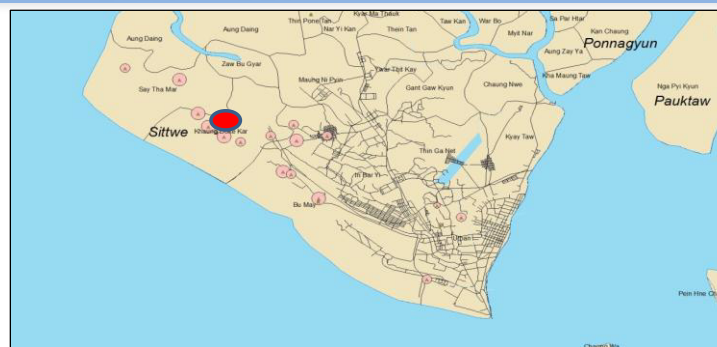
Age (Years)	Male	Female
60+	259	319
26 to 59	1,406	1562
18 to 25	1,034	1495
12-17	1,004	907
6 to 11	1,461	1300
0 < 5	1,479	1429

Age is systematically collected in the camp registration book/list

## Population Living in the Camp, by Vulnerability

Serious Medical Conditions	161
Disabilities	146
Single Parent	585
Elderly at Risk	94
Women at Risk	103
Children at Risk	116
Unaccompanied children	133
Separated children	72

Vulnerability is collected in the camp by CCCM focal point



The interagency camp profiling process is an on-going activity promoted, coordinated and delivered by the Shelter/NFI/CCCM Cluster. The information is collected from a number of sources and compiled into a series of a single camp profiles. This document represents single camp profile. The source of information are cluster focal points.



## Access to Services and Sectoral Needs



## Water &amp; Sanitation as of 01-07-15

Water needs coverage (exclu: HH soln:)	100%
Potential Water coverage (inclu: HWTS)	100%
Est: water needs coverage at EoP	100%
Latrine needs coverage	96%
Est: latrine needs coverage at EoP	100%
Bathing space coverage	100%
Est: bathroom needs coverage at EoP	100%
Hygiene kits coverage	100%
Water facilities management	Set up but low results



## Health for the period of January-15

Frequency of mobile clinic; # of day :	16
Average working hours by mobile clinic	5
# identified cases of diarrhoea	26
# identified cases of resp. tract inf.	65
# identified cases of malaria	0
# pregnant women received	71
# clients/family planning received	83
# emergency reproductive health cases	0
# trained community health workers	4
# traditional birth attendants	4
# midwives and auxiliary midwives	0



## Education as of 01-06-15

	#TLS	# Enrolled		# Teacher	
		Male	Female	Male	Female
ECCD	3	70	77	5	3
Primary	6	1260	1134	25	11
Post-Prim.	0	108	118	1	3
Total	9	1438	1329	31	17



## Food (Monthly Household Ration)

Rice	13.5 kg	Salt	0.15 kg
Pulses	1.8 kg	Blended Food	1.90 kg
Oil	0.90 lit.		



## Protection as of 01-07-15

Child protection case management	Yes
Case management - adults	Yes
Psychosocial support	Yes
Child friendly spaces (CFS)	Yes
Women and girls centre	Yes
GBV related health services	NA
Community based protection group	Yes
Transferring protection skills	Yes
Adolescent assets & life skills building	Yes
Protection monitoring	Yes
Safety audits	Yes
Family tracing	Yes



## Shelter/NFI as of

Total number of built shelters	335
Temp & Permanent Shelter Coverage	100%
Individual Shelter Coverage	0%
Household covered by temporary shelters	2680
Total number of Building Shelters	0
<b>Available infrastructure:</b>	
MPB Large	2
MPB Small	1

## Lasts NFI Distributions:

DRC	2014-03-01
UNHCR	2013-12-05



## CCCM as of 01-07-15

CCCM Type	Camp Management
CCCM Organization	DRC
Opening Date	0

## Gaps:

Gaps identified by camp managers:  
Registration, Firewood/ fuel, Shelter maintenance

Gaps identified by camp residents:  
Vocational training, 0, 0

## Livelihood:

Current activities for male:  
0, 0, 0

Current activities for female:  
0, 0, 0

Self reliance programme in place: 0

## Food : (last food distributions)

Donor	HH	Ind	Update
WFP	1151	6708	2015-07-01



## Nutrition as of 29-05-15

Therapeutic Care Program( OTP/SC)	Yes
Blanket Sup. Feeding Program(BSFP)	No
Targeted Sup. Feeding for MAM (TSFP)	Yes
Infant and Young Child Feeding support	Yes
Mental Health Care Practice(MHCP)	Yes
Micro-nutrient supplementation(MMN)	Yes
Ante Natal Care activity(ANC)	Yes
Mental Health Care Practice(MHCP)	Yes
Screening	Yes

For more information, contact UNHCR Yangon Information Management Unit - ricouart@unhcr.org or the national CCCM cluster coordinator- benson@unhcr.org



## Total Number of IDP

11,704

## Total Number of Households

2,243

## Geographic Data

## GPS Coordinates

State / Region : Rakhine

Latitude : 20.19°

Township : Sittwe

Longitude : 92.80°

Vil. Tract / Town : Khaung Doke Kar

Village/Ward : Baw Du Hpa

## Available Services (in camp, outside the camp, no access) as of 06-07-15

Temp. Learning Space	Inside the camp	School	Outside the camp
Child Friendly Space	Inside the camp	Walkways	Inside the camp
Health facilities	Outside the camp	Mobile clinic	Outside the camp
Drinking Water	Inside the camp	Market	Inside the camp

## Population dynamics

# birth	20
# death	6

## Repartition by Ethnicities (estimated)

Hindu	0%	Muslim	100%
Kaman	0%	Rakhine	0%
Maramagyi	0%		

## Population living in the camp by Age &amp; Gender

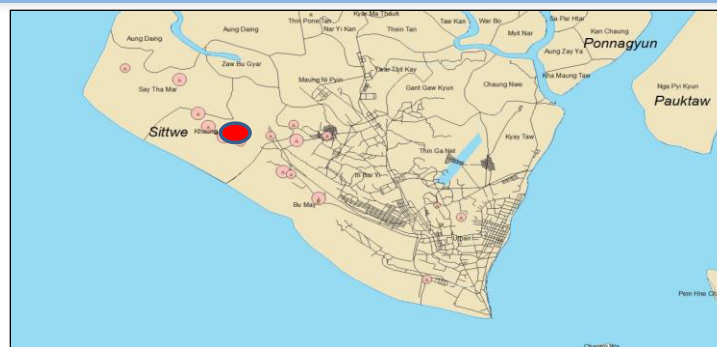
Age (Years)	Male	Female
60+	197	183
26 to 59	1,331	1,353
18 to 25	799	1,214
12-17	957	835
6 to 11	1,316	1,190
0 < 5	1,179	1,150

Age is systematically collected in the camp registration book/list

## Population Living in the Camp, by Vulnerability

Serious Medical Conditions	1
Disabilities	33
Single Parent	200
Elderly at Risk	1
Women at Risk	581
Children at Risk	10
Unaccompanied children	44
Separated children	6

Vulnerability is collected in the camp by CCCM focal point



The interagency camp profiling process is an on-going activity promoted, coordinated and delivered by the Shelter/NFI/CCCM Cluster. The information is collected from a number of sources and compiled into a series of a single camp profiles. This document represents single camp profile. The source of information are cluster focal points.



## Access to Services and Sectoral Needs

## Water &amp; Sanitation as of 01-07-15

Water needs coverage (exclu: HH soln:)	100%
Potential Water coverage (inclu: HWTS)	100%
Est: water needs coverage at EoP	100%
Latrine needs coverage	100%
Est: latrine needs coverage at EoP	100%
Bathing space coverage	0%
Est: bathroom needs coverage at EoP	50%
Hygiene kits coverage	98%
Water facilities management	Not yet set up

## Health for the period of January-15

Frequency of mobile clinic; # of day :	16
Average working hours by mobile clinic	5
# identified cases of diarrhoea	16
# identified cases of resp. tract inf.	27
# identified cases of malaria	1
# pregnant women received	18
# clients/family planning received	0
# emergency reproductive health cases	0
# trained community health workers	3
# traditional birth attendants	4
# midwives and auxiliary midwives	0

## Education as of 01-06-15

	#TLS	# Enrolled		# Teacher	
		Male	Female	Male	Female
ECCD	7	150	174	10	9
Primary	9	1078	851	19	17
Post-Prim.	0	216	141	5	3
Total	16	1444	1166	34	29

## Food (Monthly Household Ration)

Rice	13.5 kg	Salt	0.15 kg
Pulses	1.8 kg	Blended Food	1.90 kg
Oil	0.90 lit.		

## Protection as of 01-07-15

Child protection case management	Yes
Case management - adults	Yes
Psychosocial support	Yes
Child friendly spaces (CFS)	Yes
Women and girls centre	Yes
GBV related health services	NA
Community based protection group	Yes
Transferring protection skills	Yes
Adolescent assets & life skills building	Yes
Protection monitoring	Yes
Safety audits	Yes
Family tracing	Yes

## Shelter/NFI as of

Total number of built shelters	285
Temp & Permanent Shelter Coverage	100%
Individual Shelter Coverage	0%
Household covered by temporary shelters	2320
Total number of Building Shelters	0

## Available infrastructure:

Camp Management Office	1
MPB Large	1
MPB Small	4
Warehouse	3

## Lasts NFI Distributions:

LWF 2013-11-19

## CCCM as of 01-07-15

CCCM Type	Camp Management
CCCM Organization	Lutheran World Federation
Opening Date	0

Complaints mechanism in place

## Gaps:

Gaps identified by camp managers: 0, Health facilities, NFI

Gaps identified by camp residents:

Access to job opportunities, Health facilities, NFI

## Livelihood:

Current activities for male:

Trade, Livestock, Fishing

Current activities for female:

Livestock, Trade, Other

Self reliance programme in place: 0

## Food : (last food distributions)

Donor	HH	Ind	Update
WFP	262	1096	2015-07-01

## Nutrition as of 29-05-15

Therapeutic Care Program( OTP/SC)	Yes
Blanket Sup. Feeding Program(BSFP)	No
Targeted Sup. Feeding for MAM (TSFP)	Yes
Infant and Young Child Feeding support	Yes
Mental Health Care Practice(MHCP)	Yes
Micro-nutrient supplementation(MMN)	Yes
Ante Natal Care activity(ANC)	Yes
Mental Health Care Practice(MHCP)	Yes
Screening	Yes

For more information, contact UNHCR Yangon Information Management Unit - ricouart@unhcr.org or the national CCCM cluster coordinator- benson@unhcr.org